

# PERSONAL DELIVERY DEVICES (PDDS)

Click to add text

PLANNING DIRECTORS CONFERENCE  
BLENDER, 2022  
VANESSA DOLBEE, CITY OF RENTON

1

## PERSONAL DELIVERY DEVICES

- Washington legislature adopted PDD regulatory requirements HB 1325 (2019-20)
- Autonomous devices designed to deliver packages, meals, groceries, and other items.
- Reduced vehicle trips, greenhouse gas emissions, provides secure packaged delivery, increased productivity, etc.



2

## HB 1325

An electrically powered device to which all of the following apply:

- The device is intended primarily to transport property on sidewalks and crosswalks;
- The device weighs less than 120 pounds, excluding any property being carried in the device;
- The device will operate a maximum speed of six miles per hour; and
- The device is equipped with automated driving technology, including software and hardware, enabling the operation of the service, with the support and supervision of the remote personal deliver device operation.



AMAZON SCOUT

3



## ADDITIONAL STANDARDS RCW 46.75

Tracked with a unique ID number, monitored and controlled by an operator, belong to a business with an insurance policy that covers liability of at least \$100,000, yield to pedestrians and bikes, and have effective brakes and lights

4



## HB 1325 – 2019-20

An eligible entity may operate a personal delivery device so long as all of the following requirements are met:

- (1) The personal delivery device is operated in accordance with all ordinances, resolutions, rules and regulations established by the jurisdiction governing the rights-of-way within which the personal delivery device is operated;

5

## LOCAL REGULATIONS

Two areas to address at the local level:

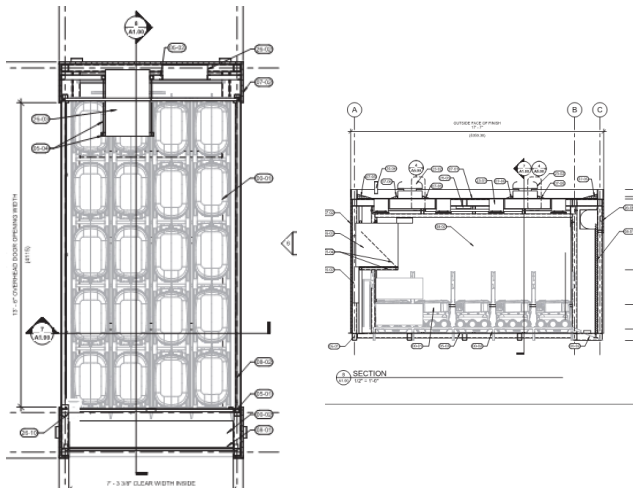
- Zoning for private property for dispensaries
- Rules for operating within the Right-of-way



DISPENSARIES

6





## DISPENSARIES

- 147 SF structure to house 20 PDD's
- Charges and stores PDD's
- Apx. 8 ft. x 17 ft. (size of one parking stall, plus access on sides)
- Requests for a unique address designated to the unit
- Deployed primarily in commercial and industrial zones in Snohomish Co.
- Preferred location is residential zones near single family neighborhoods

7



8

VIDEO OF FROM FIRE STATION....



9

VIDEO OF FROM FIRE STATION....



10



# TESTING...



11



12

## QUESTIONS FROM RENTON

### DISPENSARY

How many trips per day from the dispensary? **Up to two**

What hours of day do they operate? **Daylight hours only**



### OPERATION

What is the maximum number of scouts to cross the road at one time? **Varies depending upon delivery, up to 30.**

Can they operate on soft surfaces such as dirt or grass? **Designed to travel on hard surfaces**

Is the operator in visual distance? **No Each scout is monitored remotely with a resecure vehicle deployed if they need assistance.**

How do they yield to bikes and pedestrians? **Stop until impediment is cleared.**

Can they maneuver around parked cars or obstacles such as garbage cans? **Yes**

### CUSTOMER EXPERIENCE

Can the customer choose the time of the delivery? **Yes**

Does the scout drive to the porch or stay on the sidewalk? **Stays on the sidewalk and unlocks automatically for pick up.**

How long with the scout wait? **Up to 30 min.**

Can you change your deliver time? **Yes, even after the Scout has arrived at your house.**

13

## QUESTIONS?



14