

Board of Trustees & Health Care Program Board

SE Region Trustee & Chair
Francis Benjamin, Mayor, Pullman

NW Region Trustee & Vice Chair
Wendy Weiker,
Councilmember, Mercer Island

NE Region Trustee
Jerrilea Crawford
Mayor, East Wenatchee

SW Region Trustee
Jennifer Jensen,
Councilmember,
Ruston

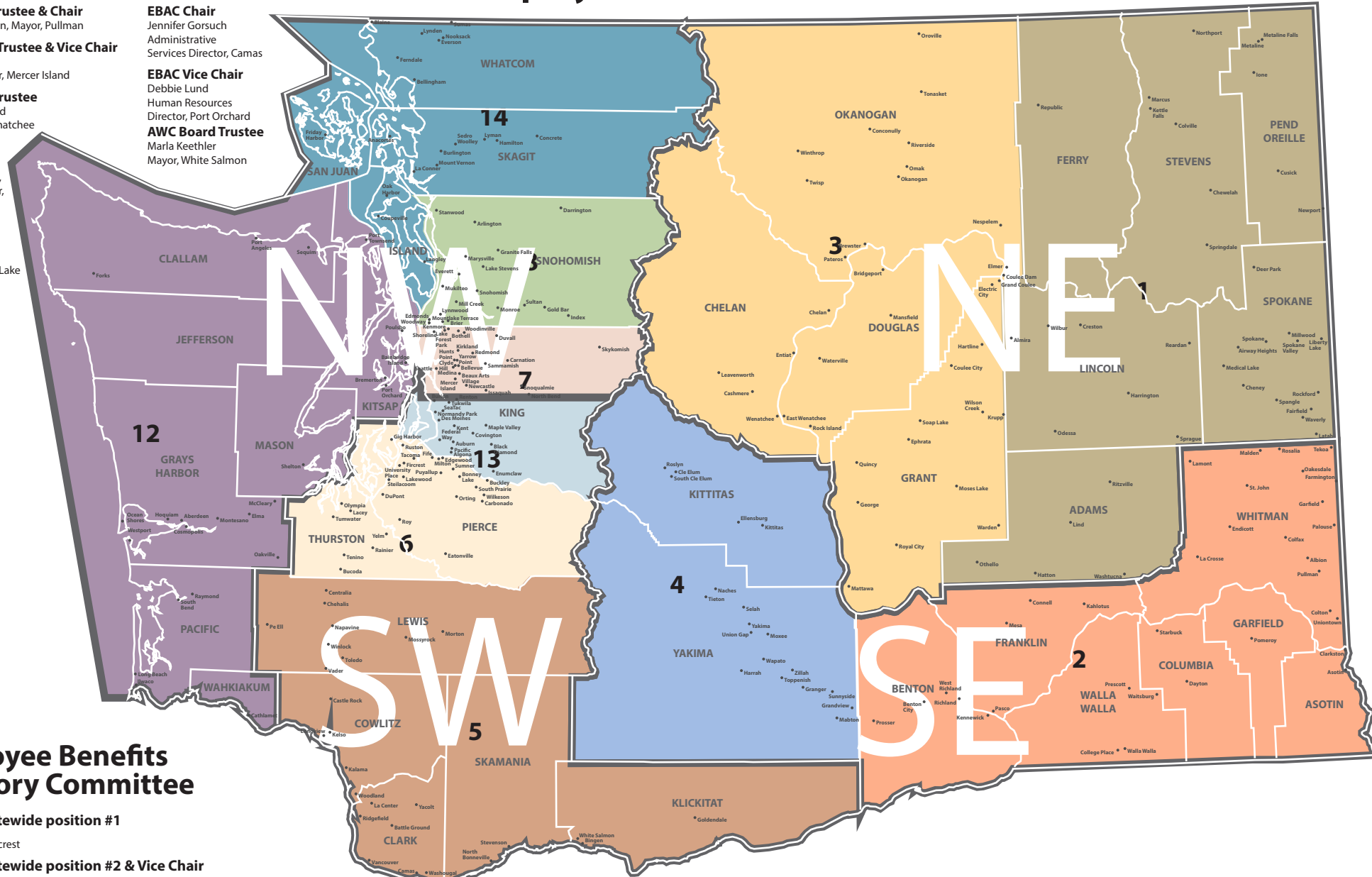
AWC Board Trustee
Terry Carter
Mayor, Bonney Lake

EBAC Chair
Jennifer Gorsuch
Administrative
Services Director, Camas

EBAC Vice Chair
Debbie Lund
Human Resources
Director, Port Orchard

AWC Board Trustee
Marla Keethler
Mayor, White Salmon

ASSOCIATION OF WASHINGTON CITIES Employee Benefit Trust



Employee Benefits Advisory Committee

At-large statewide position #1
Dawn Masko
City Manager, Fircrest

At-large statewide position #2 & Vice Chair
Debbie Lund
Human Resources Director, Port Orchard

At-large Eastern position #3
Abby Gribi
City Administrator, Newport

At-large Western position #4
Karen Bennett
Human Resources Director, Yelm

At-large noncity entity position #5
Greg Griffin
Administrative Services Manager,
Spokane Regional Transportation Council

NE Region

1 District 1
Holly Pannell
City Clerk/Human
Resources Manager,
Colville

SE Region

2 District 2
Deb Peschel
Human Resources
Manager, Pullman

SW Region

5 District 5 & Chair
Jennifer Gorsuch
Administrative Services Director, Camas

District 7
Mathew Pruitt
Human Resource
Director, Bothell

NW Region

12 District 12
Dani Smith
Human Resources Director, Aberdeen

3 District 3
Vacant

4 District 4
Heidi Riojas
City Clerk, Toppenish

6 District 6
Kelsey Geddes
Communications &
Marketing Manager,
Fife

8 District 8
Katie Casey
Human Resources Director,
Mukilteo

14 District 14
Vacant