

# Board of Trustees & Health Care Program Board

**NE Region Trustee & Chair**  
Paul Schmidt, Councilmember, Cheney

**AWC Board Trustee & Vice Chair**  
Josh Penner, Mayor, Orting

**SE Region Trustee**  
Francis Benjamin, Mayor, Pullman

**NW Region Trustee**  
Julie Struck, Mayor, South Bend

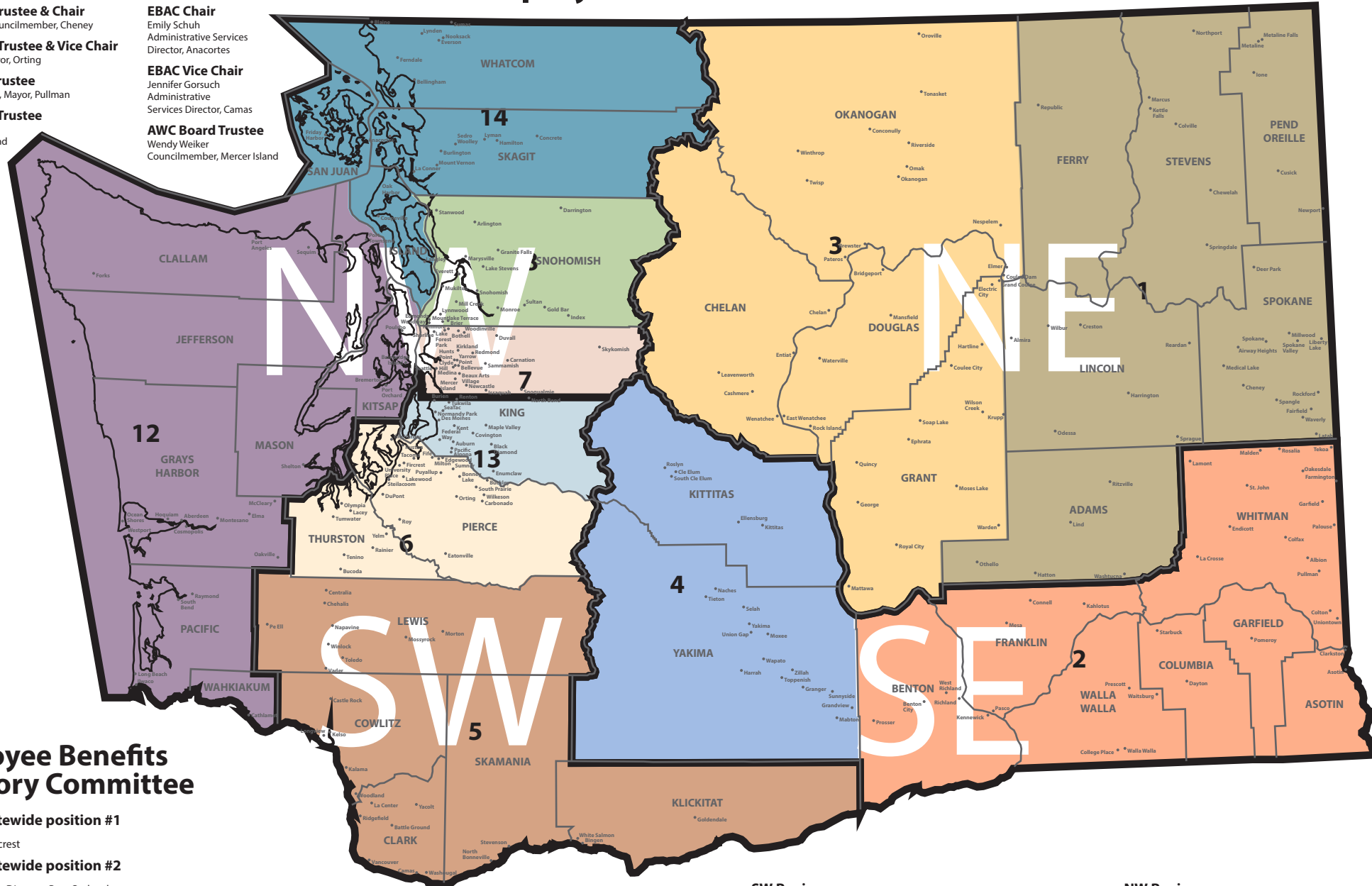
**SW Region Trustee**  
Jennifer Jensen, Councilmember, Ruston

**EBAC Chair**  
Emily Schuh  
Administrative Services Director, Anacortes

**EBAC Vice Chair**  
Jennifer Gorsuch  
Administrative Services Director, Camas

**AWC Board Trustee**  
Wendy Weiker  
Councilmember, Mercer Island

# ASSOCIATION OF WASHINGTON CITIES Employee Benefit Trust



## Employee Benefits Advisory Committee

**At-large statewide position #1**  
Dawn Masko  
City Manager, Fircrest

**At-large statewide position #2**  
Debbie Lund  
Human Resources Director, Port Orchard

**At-large Eastern position #3**  
Abby Gribi  
City Administrator, Newport

**At-large Western position #4**  
Karen Bennett  
Human Resources Director, Yelm

**At-large noncity entity position #5**  
Greg Griffin  
Administrative Services Manager,  
Spokane Regional Transportation Council

- NE Region**
- 1** **District 1**  
Holly Pannell  
City Clerk/Human Resources Manager, Colville
  - 3** **District 3**  
Katlen Henke  
HR Generalist, Wenatchee

- SE Region**
- 2** **District 2**  
Deb Peschel  
Human Resources Manager, Pullman
  - 4** **District 4**  
Heidi Riojas  
City Clerk, Toppenish

- SW Region**
- 5** **District 5 & Vice Chair**  
Jennifer Gorsuch  
Administrative Services Director, Camas
  - 6** **District 6**  
Kelsey Geddes  
Communications & Marketing Manager, Fife
  - 13** **District 13**  
Brenda Martinez,  
City Clerk/HR Manager, Black Diamond

- NW Region**
- 7** **District 7**  
Mathew Pruitt  
Human Resource Director, Bothell
  - 8** **District 8**  
Julie Good  
Senior Human Resources Specialist, Lake Stevens

- NW Region**
- 12** **District 12**  
Dani Smith  
Human Resources Director, Aberdeen
  - 14** **District 14 & Chair**  
Emily Schuh  
Administrative Services Director, Anacortes