

# Board of Trustees & Health Care Program Board

**Chair**  
Vacant

**NE Region Trustee & Vice Chair**  
Paul Schmidt, Councilmember, Cheney

**SE Region Trustee**  
Vacant

**NW Region Trustee**  
Julie Struck, Mayor, South Bend

**SW Region Trustee**  
Jennifer Jensen, Councilmember, Ruston

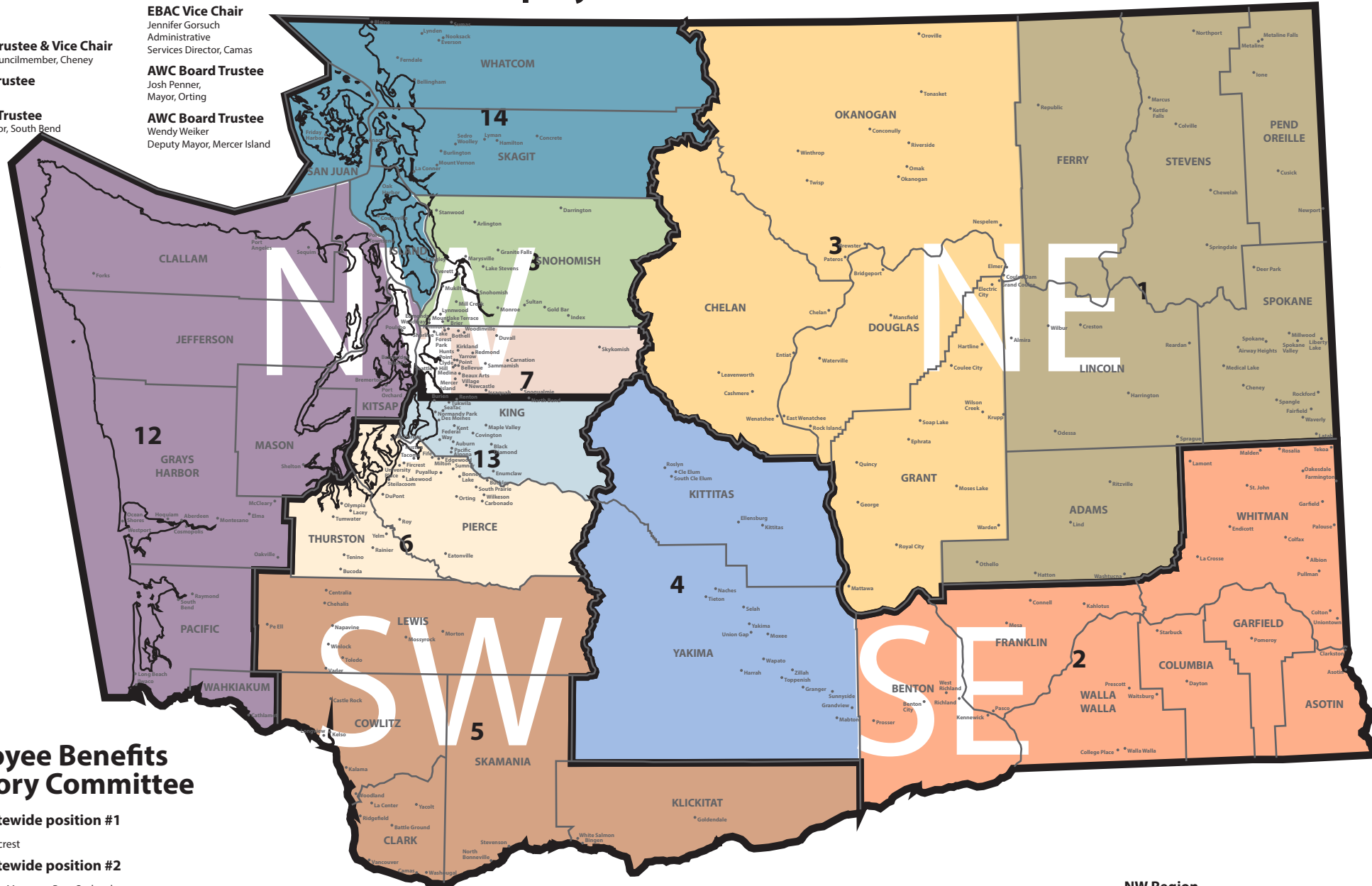
**EBAC Chair**  
Emily Schuh  
Administrative Services Director, Anacortes

**EBAC Vice Chair**  
Jennifer Gorsuch  
Administrative Services Director, Camas

**AWC Board Trustee**  
Josh Penner,  
Mayor, Orting

**AWC Board Trustee**  
Wendy Weiker  
Deputy Mayor, Mercer Island

# ASSOCIATION OF WASHINGTON CITIES Employee Benefit Trust



## Employee Benefits Advisory Committee

**At-large statewide position #1**  
Dawn Masko  
City Manager, Fircrest

**At-large statewide position #2**  
Debbie Lund  
Human Resources Manager, Port Orchard

**At-large statewide position #3**  
Abby Gribi  
Town Administrator, Newport

**At-large statewide position #4**  
Karen Bennett  
Human Resources Director, Yelm

**At-large noncity entity position #5**  
Greg Griffin  
Administrative Services Manager,  
Spokane Regional Transportation Council

**NE Region**

**1** **District 1**  
Holly Pannell  
City Clerk/Human Resources Manager, Colville

**SE Region**

**2** **District 2**  
Deb Peschel  
Human Resources Manager, Pullman

**SW Region**

**5** **District 5 & Vice Chair**  
Jennifer Gorsuch  
Administrative Services Director, Camas

**6** **District 6**  
Kelsey Geddes  
Community Engagement Manager, Fife

**13** **District 13**  
Adrienne Johnson-Newton  
Human Resources Director, Des Moines

**7** **District 7**  
Mathew Pruitt  
Human Resource Director, Bothell

**8** **District 8**  
Julie Good  
Interim Human Resources Director and Riska Manager, Lake Stevens

**NW Region**

**12** **District 12**  
Connie Anderson  
Director of Finance & Technology, Port Townsend

**14** **District 14 & Chair**  
Emily Schuh  
Administrative Services Director, Anacortes