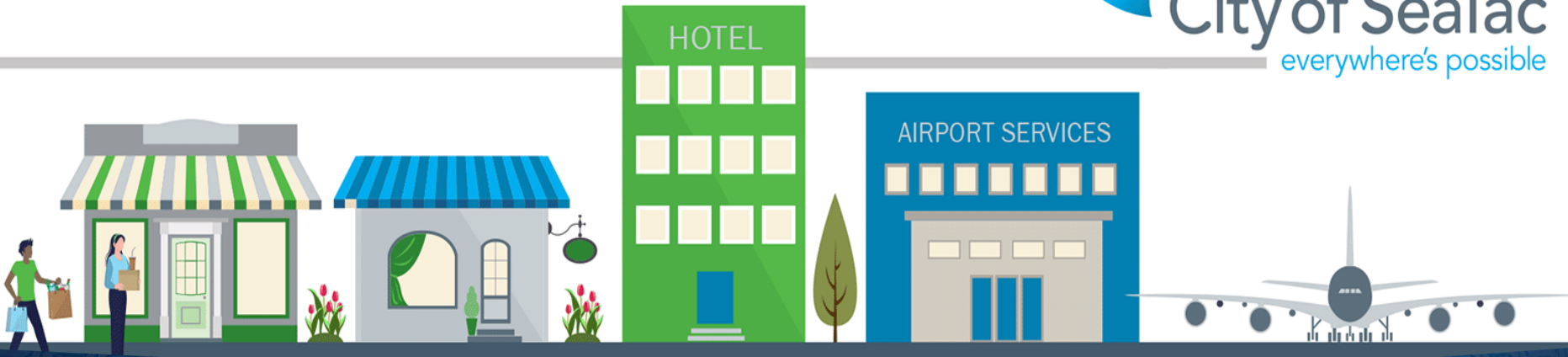


City of SeaTac Home-based Childcare Startup Program

ARPA Funded

October 16, 2024 – AWC Update



PRESENTATION OVERVIEW

PURPOSE OF PRESENTATION

Overview

Need

Program

Status / Outlook

WHY IS THIS ISSUE IMPORTANT?

The business closures, sharp decrease in customers and great resignation caused by the COVID pandemic significantly affected SeaTac businesses.

Then demand recovered. But challenges stayed.

Businesses surveyed locally and regionally indicated that barriers to recovery included childcare access and worker availability.



COVID/Recovery EFFECTS ON SEATAC BUSINESSES

Top SeaTac Business Issues on Annual SeaTac Survey:

Covid (Loss of Business)

Workforce Issues

Prior to Covid

Access to quality workers

Quality childcare access

After Covid

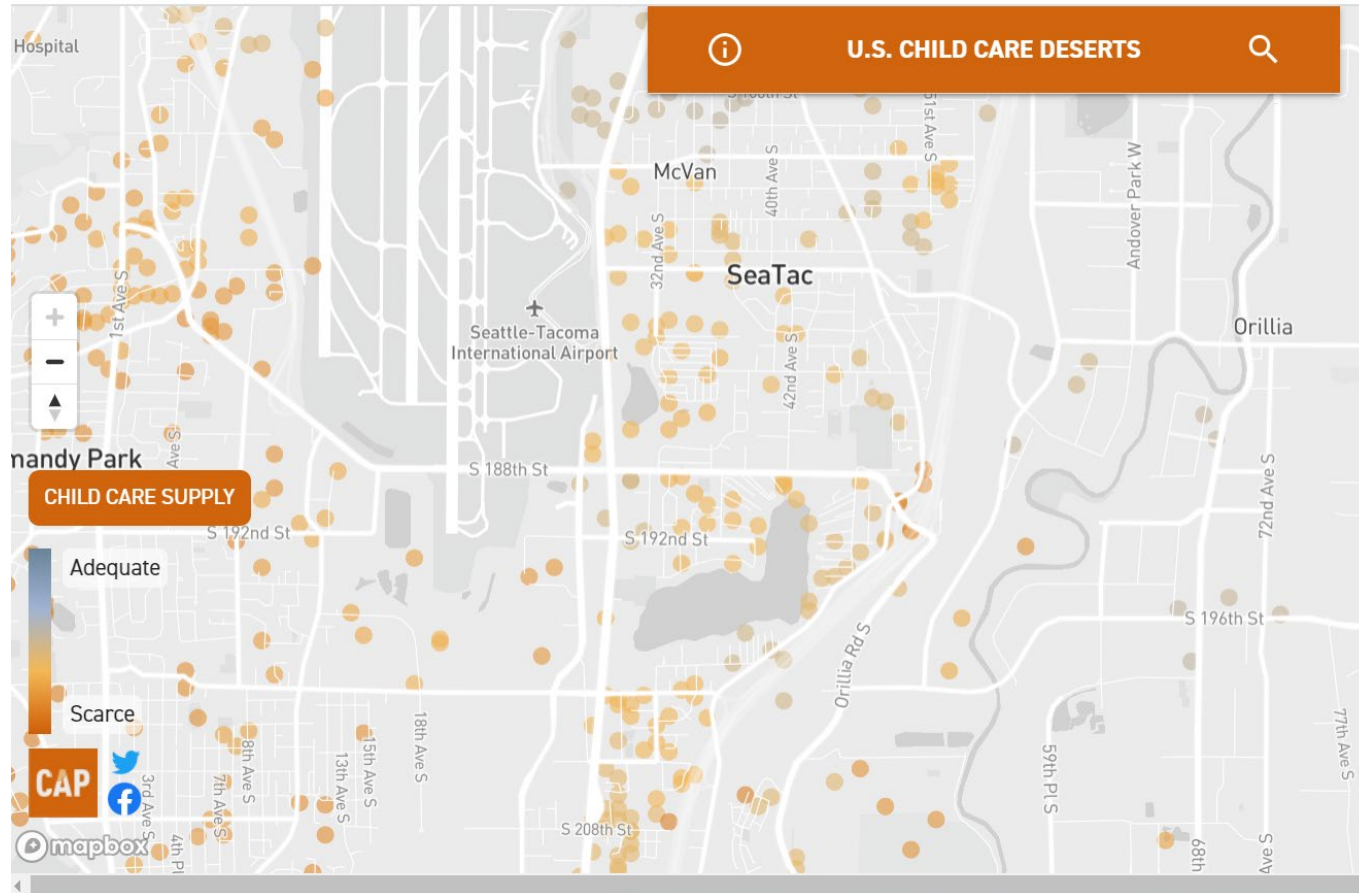
Access to quality workers

Quality childcare access



BACKGROUND INFO

Top Local Issue: Low Business Expansion Per No Childcare for Workers



Source: Childcaresdeserts.org



BACKGROUND INFO

Top Regional Issue: Workforce & Childcare for Workers

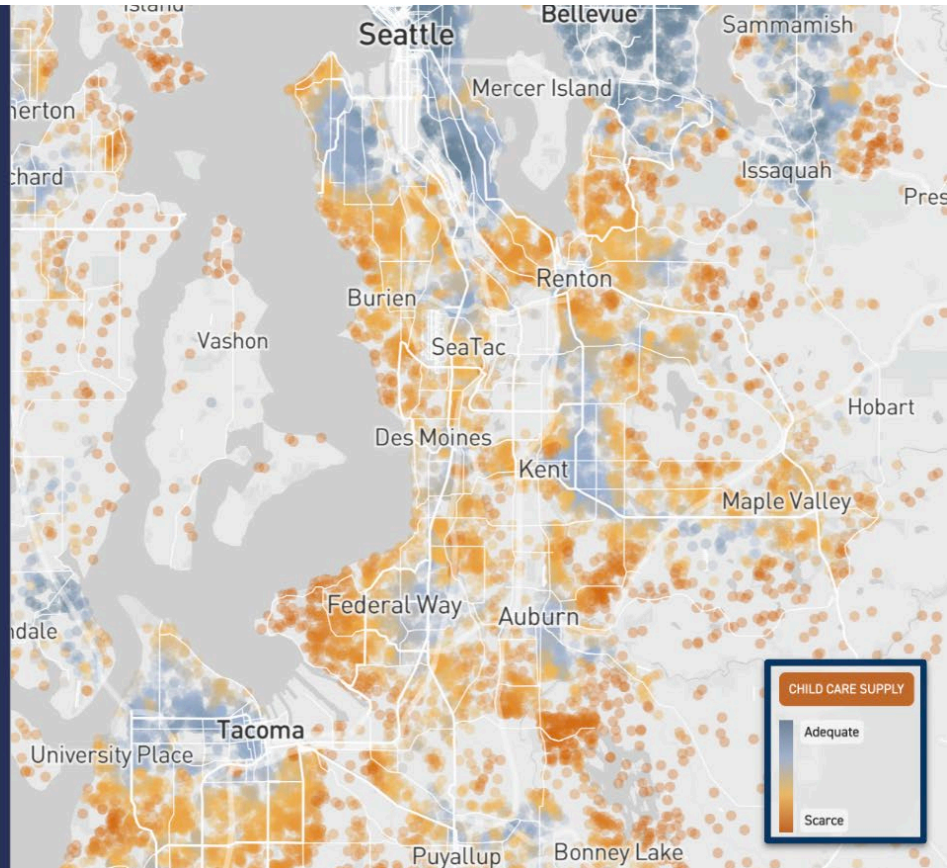
King County Child Care Supply

92,280 children
need access to child care

64,060 child care slots
are currently available

31,210 children (34%)
are unable to access care

\$1.5 billion
\$16,066 / slot
\$96,296 / program
financial impact



Source: wonderschool



BACKGROUND INFO

Top Statewide Issue: Economic Impact Per No Childcare for Workers

The current situation

Child care and early learning opportunities enrich child development, support working families, and strengthen the overall economy. But Washington’s insufficient supply of affordable, quality child care leaves parents with few options and child care providers earning poverty wages. With sustained federal investment and strong local implementation, Washington could make affordable, high-quality child care and preschool a reality for families while ensuring fair compensation for early educators.

Number of children under the age of 6 ¹	546,746
Number of infants and toddlers ²	263,703
Percentage of children under the age of 6 with all available parents in the workforce ³	60.6%
Average price of child care for two children based on market rate surveys by Child Care Aware ⁴	\$25,260
Percentage of income a typical family spends on child care based on families’ self-reported household expenses ⁵	10.6%
Percentage of population that lives in a child care desert where there are not enough child care options ⁶	63%
Number of parents making career sacrifices due to issues with child care ⁷	51,384

SourceCAP 2021 WA. Factsheet



BACKGROUND INFO

Top Regional Issue: Workforce & Childcare for Workers

	Initiative	Initiative	Initiative
1 Job Creation and Business Growth	Minority Business Accelerator \$10M ✓	Equity Loan Fund for Scale-Up Firms \$15M (loan)	Business Attraction for Emerging Industry Clusters \$1M
2 Talent Development	Shared Supportive Services for Earn and Learn Programs \$10M + \$2M loan	Expand Pre-Apprenticeship Training \$4M	
3 Business Practices	Corporate Racial Equity Coalitions \$6M	Apprenticeship Development for Mid-Sized Firms \$2.5M	Evidence Based Hiring Academy \$3.5M
4 Access to Opportunity	Job Hubs \$0.4M + \$8M loan ✓	Childcare Expansion \$7.5M ✓	

[Regional Recovery - Created by 200 leaders in KC, SC, PC](#)



The Need

Business Recovery :

Demand returned

The workers did not return

Surveyed businesses indicated access to good workers was limiting ability to recover

Workforce Issues

After Covid

Access to quality workers

Quality childcare access



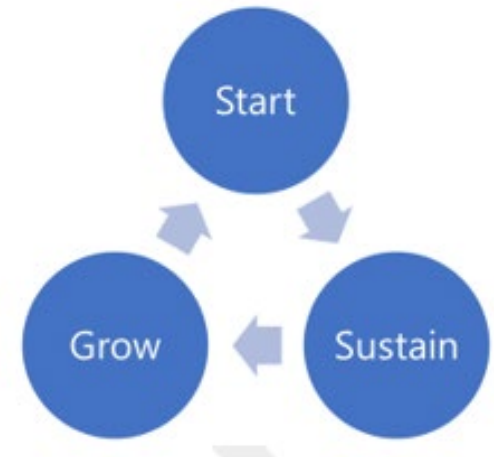
CHILDCARE INITIATIVE VISION

Purpose:

1. Easy Access – paid training
2. Fast Scale Up – Imagine Institute
3. Job Creation / Business creation

Results:

1. Bigger Employee Pool
2. More Entrepreneur Jobs
3. Higher Business Revenues



STATUS EARLY 2023

Licensed care in SeaTac:

- Total capacity across all programs: 726 children
- Total enrolled: 599 children
- Total fill rate: 83%

Family Home Care (Licensed Family Home Child Care Providers, or LFCCP)

Capacity: 6-12 children

- SeaTac Licensed Family Homes
- Total licensed facilities: 68
- Total capacity: 601
- Total enrolled: 502
- Unfilled slots: 99
- Average enrollment: Capacity ranges from 6-12 children, average of 9.7 and median of 12

SeaTac Licensed Child Care Centers

- Capacity: 13+ children (SeaTac's Centers have a capacity of 20-80 children)
- Total licensed facilities: 3
- Total capacity: 125
- Total enrolled: 97
- Unfilled slots: 28



SOLUTION

Support Childcare Availability Pipeline – Training / Licensing

- Proposed 60 new home-based childcare providers (start up businesses)
- Total new capacity of up to 720 new child enrollments
- Imagine Institute Selected to do the work
 - New Intern Training
 - Existing Mentors (train new interns)
 - Continued education for existing and new childcare businesses
 - Multiple languages
 - Multiple cohorts

Bonus outcome:

Two more childcare centers are in the process of being opened in 2024/2025



STATUS 2024

\$1.8M ARPA FUNDS – Imagine Institute SeaTac Childcare Startup Program

COHORT 1 July 2023- July 2024

Enrolled 17

Graduated 10 = capacity for 120 children to enroll

COHORT 2 January 2024-January 2025

Enrolled 16

Currently 9 on track

COHORT 3 September 2024 – September 2025

Enrolled TBD

Source: Childcaredeserts.org,
childcaregap.org



THANK YOU



City of SeaTac
everywhere's possible

