

COMMUNITY PREPAREDNESS AND RESILIENCY

1

WHY

- Community depends on you and your ability to do your job or even other people's job.
- You can't do that if you have not taken care of yourself **and** your family.
- "Disasters" start small and become emergencies because people are not fully prepared.



2

WHY 14 DAYS?



- Traditional 72 Hour Preparation Programs are not adequate. In a large scale (area/population/complexity), disaster, communities may need to be self-sufficient for 4 days.
- FEMA – going away – burden and cost to states and locals.
- Many communities are not likely to receive immediate attention in the event of a regional, statewide, or national event.

3

RISK ASSESSMENT

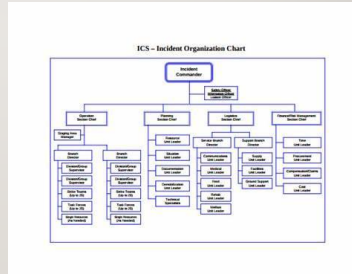
- History (last 30 years) – what has impacted your community?
- What is your county EM focusing on (Hazard/Vulnerability Assessment)?
- Events include:
 - Volcanoes / Earthquake
 - Weather - Ice / snow, wind, drought, flooding
 - Transportation
 - Communications – internet/cell
 - Utilities
 - Wildfire



4

COMMUNICATIONS / ICS

- How do you contact off-duty and in-field employees?
- How do you communicate with public?
- Basic ICS understanding



5

WHAT CAN YOU DO TO PREPARE?

Food and Water – Multiple Approaches

1. Track consumption for 2 weeks and rotate your pantry.
2. Utilize a “food list” and purchase supplies specifically for an event.
3. Purchase pre-packaged meals
4. Use a combination of the above
5. Pets?

Water – options include commercial decontamination, bottled water, stored water and/or water stored.



6

PREPARE YOUR HOME / FAMILY

- Secure stored materials
- Plan – how to meet up, emergency contacts
- Phones – solar charger?
- Medications
- Transportation
- Utilities – how to manage – what level of comfort / service will you want?
 - Generator
 - Cooking
 - Heating

7

PARTNERS

- IMT Participation
- CEMP / CWPP
- EM Contacts
 - Attend the meetings
 - Participate in the exercises

8

PUBLIC

- Business Community – 50% don't re-open
- You have distinct populations:
 - Community Risk Reduction
 - Encourage / engage those that can – prepare and be part of the solution.
 - Focused effort on those that cannot.
 - Accept that some will opt out and become a liability.

9

ELECTED OFFICIALS

- Know your role – stay in your lane
- Define your level of service during emergencies.
- Support an accepted level of preparedness in time of stability.
- Stay informed – read the executive summary of plans and understand basic ICS



10

RESOURCES

- American Red Cross – www.redcross.org
- Washington State EMD – www.emd.wa.gov/preparedness
- FEMA – www.fema.gov/plan