



Wildfire Resiliency Planning 2025

Association of Washington Cities

Annual Conference 2025

Summer 2025

1

STRENGTHENING COMMUNITIES



Our **Mission** is to enable vibrant communities through energy. **Safely. Responsibly. Affordably.** We put those we serve at the center of everything we do.

Our **Purpose** goes beyond providing the energy that powers the daily lives of our customers. We're here to improve the quality of life and to enhance the strength, health, and vitality of the communities we serve, and the communities we call home.



2

1



We are doing more to help prevent wildfires.



3



Guarding against growing risks

Avista continues our commitment to keeping people and property safe. In 2020, we began implementing our 10-year Wildfire Resiliency Plan for preventing, mitigating and reducing the impact of wildfires.

We believe this is a wise investment geared toward safety and preparedness for the communities we serve and call home.



4

Our Four-Part Plan Includes:



1. Grid Hardening

- Gradual Shift to Strategic Undergrounding
- Wood to Steel Pole Change-out
- Pole Mesh
- Conductor Enhancement



2. Enhanced Vegetation Management

- 100% inspection of Risk Trees annually



3. Situational Awareness

- AI Fire Detection Cameras
- Weather Station Installations for Real-Time Data



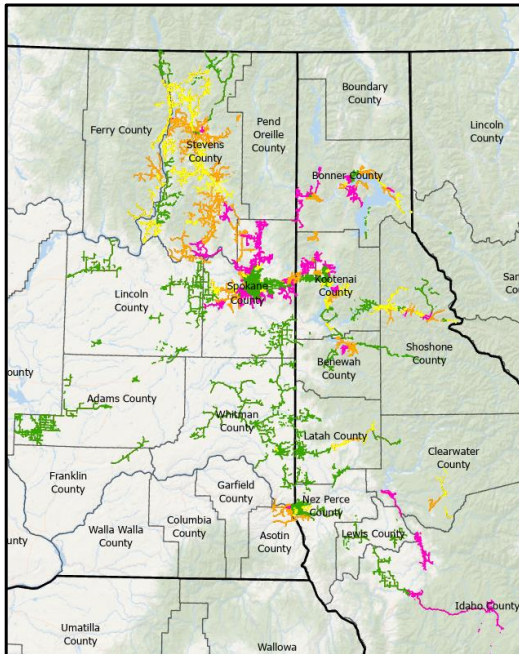
4. Operations and Emergency Response

- Expanded fire protection settings
- Public Safety Power Shutoff (PSPS)



5

System Overview



ID Electric Customers	WA Electric Customers	Total
133,243	205,433	338,676
ID Service Area Pop.	WA Service Area Pop.	Total
351,586	903,982	1,255,568

Wildfire Risk	ID (miles)	WA (miles)	Total
Tier 0	1,180.8	2,669.5	3,852.7
Tier 1	349.3	779.5	1,128.9
Tier 2	418.2	1,056.3	1,474.5
Tier 3	619.4	651.9	1,271.3
Totals	2,567.7	5,157.1	7,727.3

6

Building Resiliency

Improving System Resiliency, Safety, and Reliability



Strategic Undergrounding



Automation



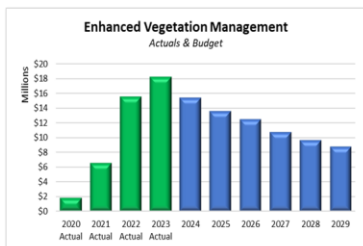
Transmission



7

Reducing Vegetation Risk

Enhanced Vegetation Management Practices



Customer Partnerships

Agency Partnerships

Technology



100% Risk Tree Inspection & Removal



8

Fuels Reduction Assistance Program

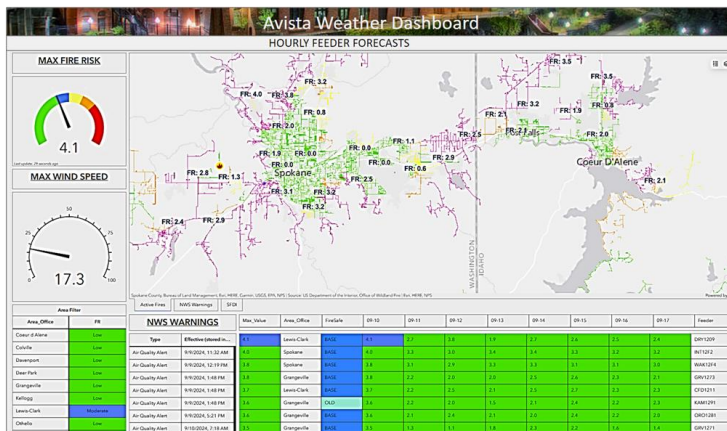
Avista has partnered with Local and State agencies to improve forest and landscape health.

- ✓ Projects reduce risk of extreme fire behavior by removing wildland fuels (brush, understory trees, limbs) or modifying the continuity of the fuels to cause fire behavior to be less extreme.
- ✓ Include mastication work with machinery, hand crews with chainsaws and chippers, pruning and limbing of trees, and even grazing with goats to remove brush and fine fuels.
- ✓ Avista reimburses agencies once work is complete that improves conditions for Avista customers and reduces fire risk.



Increasing Wildfire Risk Awareness

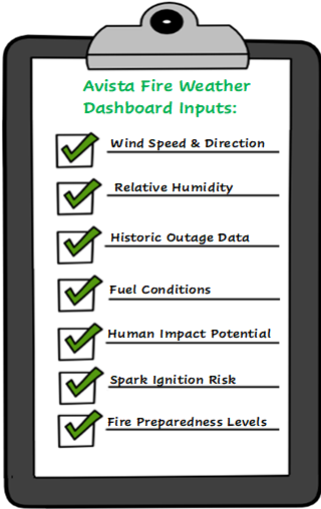
Using Technology to Predict and Respond to Fires



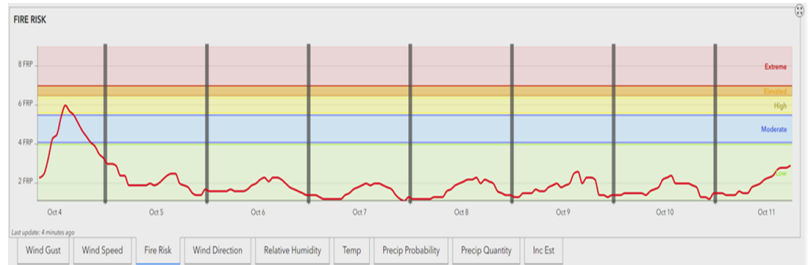
- Fire Weather Dashboard
- Customized WUI Map
- Wildfire Cameras
- Weather Stations



Fire Safety Mode & Protection Settings



Max Value	Area Office	FireSafe	09-26	09-27	09-28	09-29	09-30	09-31	09-01	09-02	Feeder
5.9	Spokane	MSB	5.9	5.9	5.9	5.9	5.9	5.9	5.9	5.9	NT1292
5.9	Leaven Clark	MSB	5.9	5.9	5.9	5.9	5.9	5.9	5.9	5.9	SBY1209
5.9	Spokane	MSB	5.9	5.9	5.9	5.9	5.9	5.9	5.9	5.9	WAK1204
5.9	Leaven Clark	MSB	5.9	5.9	5.9	5.9	5.9	5.9	5.9	5.9	CFD1211
5.4	Spokane	MSB	5.4	5.4	5.4	5.4	5.4	5.4	5.4	5.4	SUN1205
5.4	Spokane	MSB	5.4	5.4	5.4	5.4	5.4	5.4	5.4	5.4	SE1204
5.3	Davenport	MSB	5.3	5.3	5.3	5.3	5.3	5.3	5.3	5.3	FOR1201
5.3	Spokane	MSB	5.3	5.3	5.3	5.3	5.3	5.3	5.3	5.3	SUN1204



11

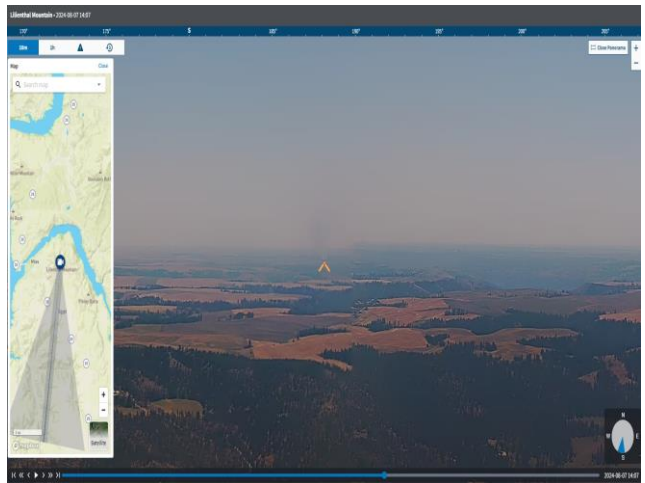
Situational Awareness

Weather Stations – These installations will occur across the Avista service territory

- Brings real-time/site specific data to multiple operational areas improving safety and decision making
- Increases the accuracy and timeliness of forecasts with improved coverage and increased data

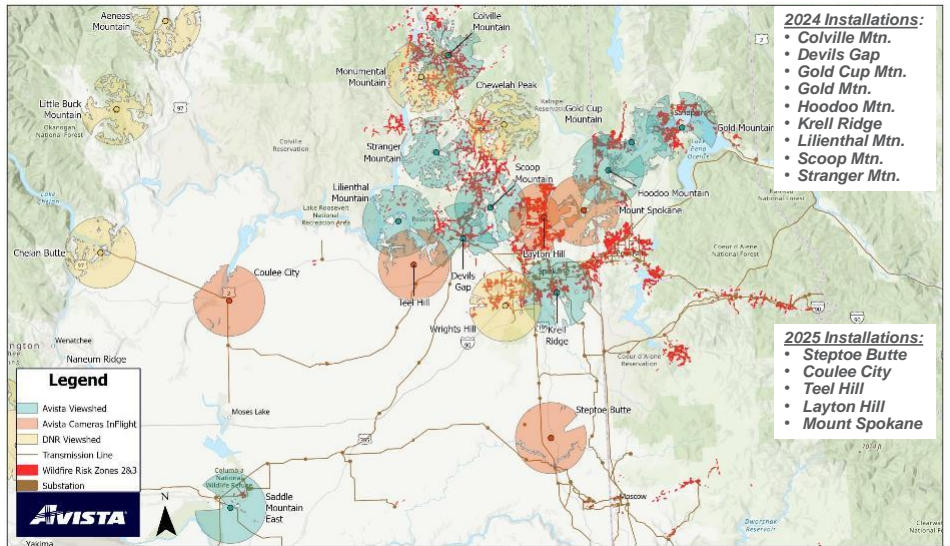
Mountain Top Cameras – Avista has installed 10 fire detection cameras across our service area; five more will be installed in 2025 in Washington

- These cameras give Avista personnel and First Responders improved detection capability through AI detection
- Provide real time situational awareness of fire conditions, allowing fire managers to make better and more timely decisions
- Allow Avista operational personnel to determine threat to Avista assets remotely



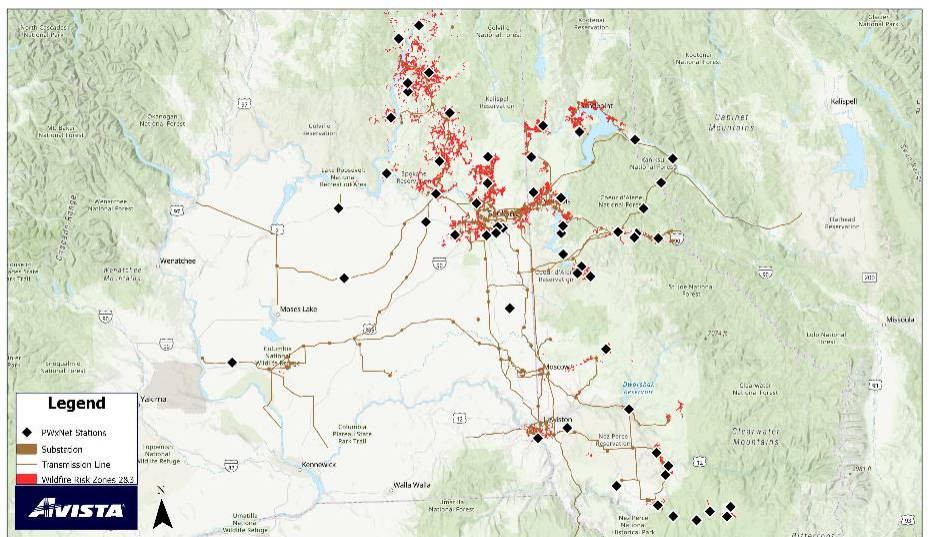
12

2025: Continue Growth of AI Camera Coverage



13

2025: Increase Situational Awareness with Weather Stations



14

Operating to Reduce Risks

Reducing Risks Through Emergency Operations and Response
- Full Range of Protection Settings



AVISTA

15

Public Safety Power Shutoffs (PSPS)

- PSPS is **proactively** turning off power to select locations prior to extreme weather impacts
- Avista is prepared to continue to use PSPS in 2025 - as a tool of last resort
- We've developed criteria and customer support strategies necessary to implement PSPS
- **Collaboration** with public safety partners, municipalities, tribes and key stakeholders is essential

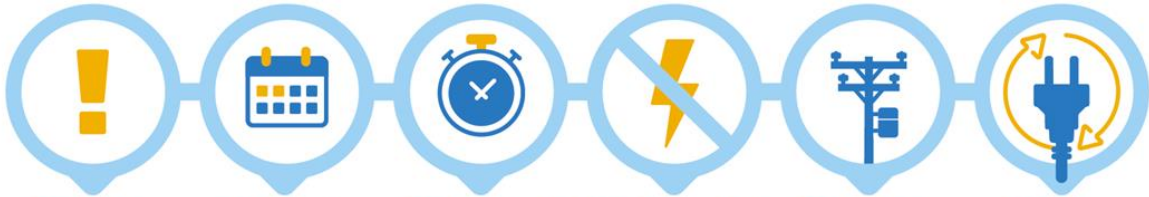


AVISTA

16

Public Safety Power Shutoffs (PSPS)

Timeline Developed to Ensure Customer Awareness and Protect Communities



PSPS Watch

Sent when a PSPS event is possible.

PSPS Warning

Sent when a PSPS event is likely.

PSPS Imminent

Sent when a PSPS event is imminent.

PSPS Outage Alert

Sent when a PSPS outage begins.

PSPS Updates

Sent as needed and when restoration work begins.

PSPS Over

Sent when power has been restored.



17

PSPS Restoration Process

Ensuring Restoration is Done Safely and Carefully



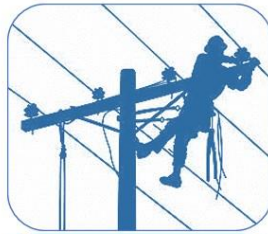
Line Patrol:

- “All Clear” is declared by decision-makers
- Field Crews Mobilized
- Broad Communications to Customers Including Help With Support Resources



Restore Power:

- Start with Critical Infrastructure, Commercial Zones with Equity Considerations
- Communicate Estimated Restoration Time to Customers



Complete Repairs:

- Main Trunk Lines
- Branch Lateral Circuits
- Individual Customers
- Update & Communicate Estimated Restoration Time to All



Event Ends:

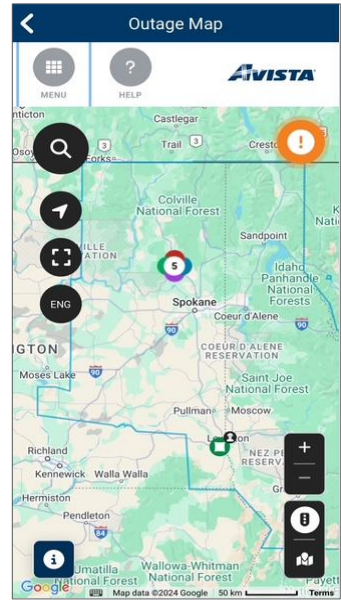
- EOP is Declared Over
- After Action Review With Emergency 1st Responders
- PSPS Report to Regulators
- Thank You to Crews & Customers



18

Future Plans for our Partners

- Partner alert system to notify you of a potential PSPS via email and/or text
- GIS Online mapping tool to include:
 - ✓ Life support customers
 - ✓ Critical Facilities
- Track shutoff progress from watch/warning → de-energization → patrolling → damage and/or → re-energization
- **Future** enhancements to provide widgets to weather stations, mountain top cameras and all other weather outage hazards including gas, points of interest (Activated CRC's)



19

Community Outreach in 2025

Focus on PSPS

- Public Safety Partners
- Elected Officials and Municipalities
- Community Leaders
- Medically vulnerable customers
- Commercial and Residential Customers

Community Engagement and Support

- Outage map enhancements
- Education and Outreach
- Medically vulnerable customers
- Community Resource Centers (CRCs)

Encourage Preparedness



20

Discussion

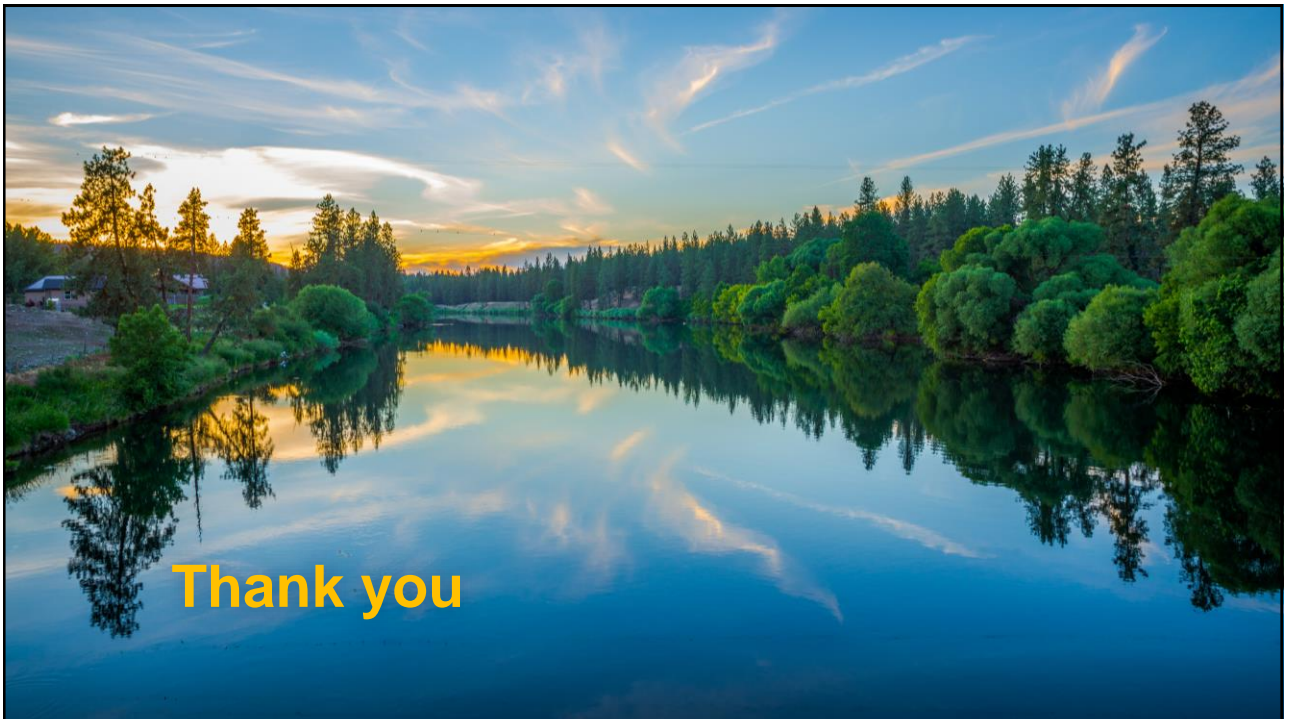
• Emergency Response in your City / County

- What concerns you most about extended power outages during wildfire season?
- What does your community need?
- Who/how would you like to be notified?
- Partnership opportunities?
 - Public safety
 - Community engagement
 - Outage preparedness
- Next Steps...



AVISTA

21



22