



# Future of Energy Issaquah Initiatives

JUNE 20, 2024 | AWC CONFERENCE

MARY LOU PAULY, MAYOR | CITY OF ISSAQUAH

1

Overview of  
Issaquah



2

# Issaquah Climate Action Plan Commitments

## Overarching Climate Actions

Reduce communitywide GHG emissions and inspire climate action through outreach, engagement, and leadership.



Targets & Metrics	Strategies	Key Actions
<ul style="list-style-type: none"> <li>50% decrease in GHG emissions by 2030</li> <li>75% decrease in GHG emissions by 2040</li> <li>95% decrease GHG emissions &amp; net zero emissions by 2050</li> </ul>	<ul style="list-style-type: none"> <li>Outreach and education, partner within the region, and advocate for regional and statewide policies.</li> <li>Reduce emissions from municipal operations.</li> </ul>	<p><b>OV 1.3:</b> Participate in regional partnerships</p> <p><b>OV 2.3:</b> Strengthen the Sustainable Building &amp; Infrastructure Policy</p> <p><b>OV 2.6:</b> Electrify municipal fleet vehicles</p>

## Buildings & Energy

Reduce GHG emissions from buildings through energy efficiency, electrification, and transitioning to renewable sources.

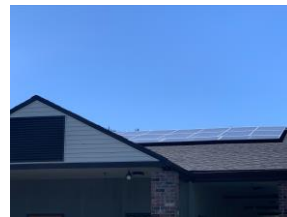


Targets & Metrics	Strategies	Key Actions
<ul style="list-style-type: none"> <li>25% decrease in building energy use by 2030</li> <li>Net-zero GHG emissions in new buildings by 2030</li> <li>Reduce fossil fuel use in existing buildings 20% by 2030 and 80% by 2050</li> <li>100% renewable electricity in municipal buildings by 2025</li> </ul>	<ul style="list-style-type: none"> <li>Reduce overall building energy use and improve energy resilience.</li> <li>Advance building decarbonization.</li> <li>Transition away from fossil fuels to clean, renewable, energy sources.</li> </ul>	<p><b>BE 1.1:</b> Develop energy efficiency outreach and incentive programs</p> <p><b>BE 2.2:</b> Implement regional heat pump campaign</p> <p><b>BE 2.5:</b> Enact all-electric building code</p>

3

## Investing in Renewables

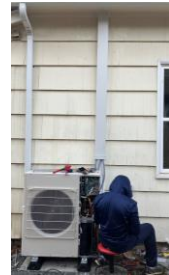
- City Facilities subscribe to 100% renewable electricity
- City Facility Assessments for solar and storage
- Partnerships with PSE: Community Solar, Green Power
- Residential initiatives



4

## Investing in Electrification

- City facilities and fleet
- Residential initiatives, focused on equity
- PSE partnerships



5

## Investing in Energy Efficiency

- City facilities lighting and energy audits
- Clean buildings incentives
- Promoting resources



6

# Success & Learning Opportunities

---

## Success

- Public and Private Partnerships
- Cross-departmental Partnerships
- Pilot Projects
- State Funding

## Challenges

- Capacity for Engagement
- Expanding Partnerships
- Understanding Impact to Our Systems
- Building Redundancy and Resilience

7

# Issaquah Resources

---

Learn more @ [issaquahwa.gov](http://issaquahwa.gov)



OUR PLAN  
[/CLIMATE-ACTION-PLAN](#)



OUR PROGRAMS  
[/PROGRAMS](#)



OUR DASHBOARD  
[/CLIMATE-ACTION-PLAN-DASHBOARD](#)

8