

Clean Buildings Incentive Programs

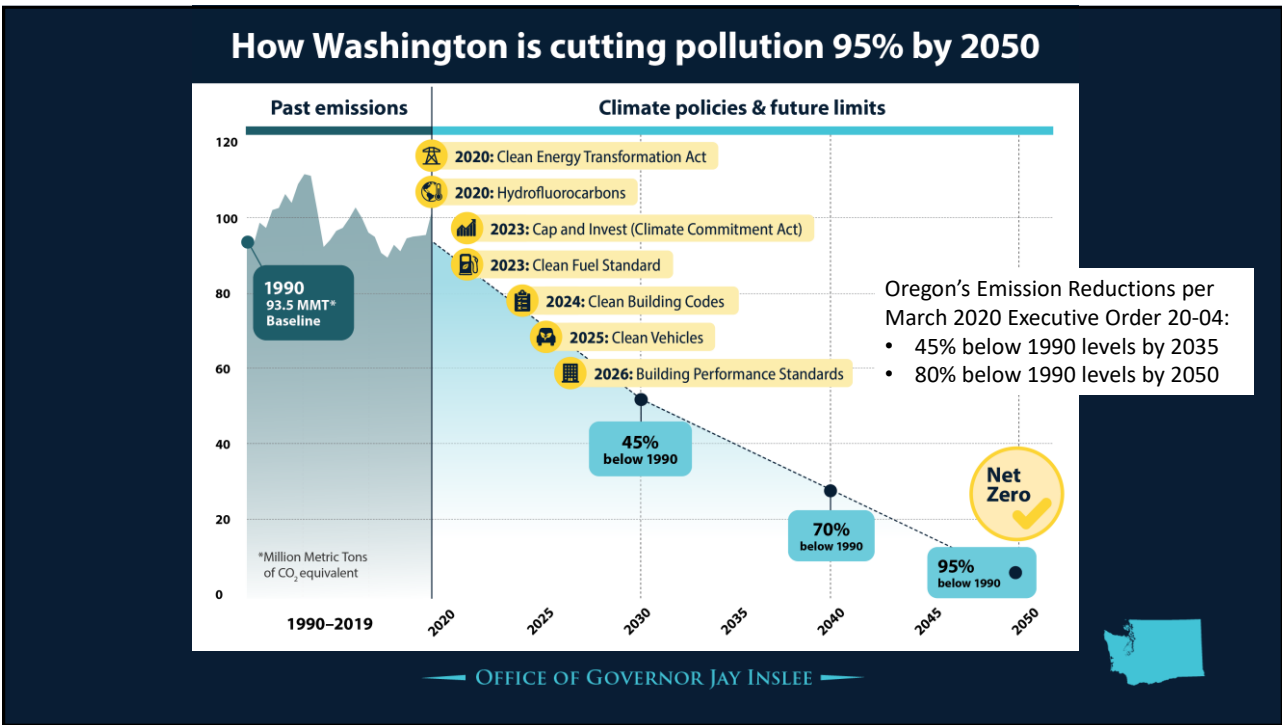
Exploring the Need



Perry England
Building Performance
MacDonald-Miller

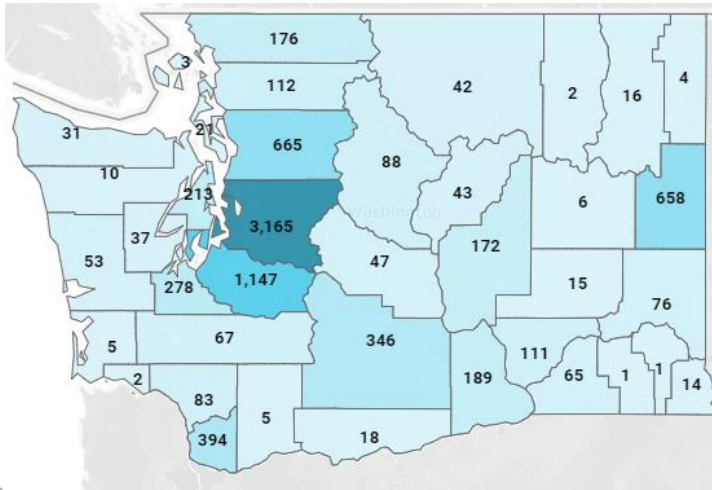


1



2

The Need for Cities to Engage



- Tier 1 = ~8,200 Buildings
- Tier 2 = ~2.5x Tier 1 or ~20,000 Buildings

Select Cohort Size.

- (All)
- 50-90K
- 90-220K
- 220K~



MacDonald-Miller
FACILITY SOLUTIONS

3

City Incentive Programs

Bellevue Clean Buildings Incentive Program



Bellevue Clean Buildings Incentive Program

The Early Adopter Program helps Bellevue building owners comply with the WA State Clean Buildings Law by providing a complimentary Energy Star benchmark to understand your current energy usage, avoid penalties with an energy scoring assessment, and earn incentives as an early adopter.

PROGRAM PARTICIPANTS RECEIVE

- Energy Star benchmark
- Annual energy assessment
- Energy Star certification (if eligible)
- Energy Star certification (if eligible)
- Energy Star certification (if eligible)
- Energy Star certification (if eligible)
- Energy Star certification (if eligible)
- Energy Star certification (if eligible)
- Energy Star certification (if eligible)
- Energy Star certification (if eligible)

Learn more and see how to register for the program.

Visit www.bellevuewa.gov/cleanbuildings for more information.

For more information, please contact the City of Bellevue at cleanbuildings@bellevuewa.gov.

For more information, please contact the City of Bellevue at [206.462.4000](tel:2064624000).

For more information, please contact the City of Bellevue at [206.462.4000](tel:2064624000).

For more information, please contact the City of Bellevue at [206.462.4000](tel:2064624000).

For more information, please contact the City of Bellevue at [206.462.4000](tel:2064624000).

For more information, please contact the City of Bellevue at [206.462.4000](tel:2064624000).

For more information, please contact the City of Bellevue at [206.462.4000](tel:2064624000).

For more information, please contact the City of Bellevue at [206.462.4000](tel:2064624000).

For more information, please contact the City of Bellevue at [206.462.4000](tel:2064624000).

For more information, please contact the City of Bellevue at [206.462.4000](tel:2064624000).

For more information, please contact the City of Bellevue at [206.462.4000](tel:2064624000).

For more information, please contact the City of Bellevue at [206.462.4000](tel:2064624000).

For more information, please contact the City of Bellevue at [206.462.4000](tel:2064624000).

For more information, please contact the City of Bellevue at [206.462.4000](tel:2064624000).

For more information, please contact the City of Bellevue at [206.462.4000](tel:2064624000).

For more information, please contact the City of Bellevue at [206.462.4000](tel:2064624000).

For more information, please contact the City of Bellevue at [206.462.4000](tel:2064624000).

For more information, please contact the City of Bellevue at [206.462.4000](tel:2064624000).

For more information, please contact the City of Bellevue at [206.462.4000](tel:2064624000).

For more information, please contact the City of Bellevue at [206.462.4000](tel:2064624000).

For more information, please contact the City of Bellevue at [206.462.4000](tel:2064624000).

For more information, please contact the City of Bellevue at [206.462.4000](tel:2064624000).

For more information, please contact the City of Bellevue at [206.462.4000](tel:2064624000).

For more information, please contact the City of Bellevue at [206.462.4000](tel:2064624000).

For more information, please contact the City of Bellevue at [206.462.4000](tel:2064624000).

For more information, please contact the City of Bellevue at [206.462.4000](tel:2064624000).

For more information, please contact the City of Bellevue at [206.462.4000](tel:2064624000).

For more information, please contact the City of Bellevue at [206.462.4000](tel:2064624000).

For more information, please contact the City of Bellevue at [206.462.4000](tel:2064624000).

For more information, please contact the City of Bellevue at [206.462.4000](tel:2064624000).

For more information, please contact the City of Bellevue at [206.462.4000](tel:2064624000).

For more information, please contact the City of Bellevue at [206.462.4000](tel:2064624000).

For more information, please contact the City of Bellevue at [206.462.4000](tel:2064624000).

For more information, please contact the City of Bellevue at [206.462.4000](tel:2064624000).

For more information, please contact the City of Bellevue at [206.462.4000](tel:2064624000).

For more information, please contact the City of Bellevue at [206.462.4000](tel:2064624000).

For more information, please contact the City of Bellevue at [206.462.4000](tel:2064624000).

For more information, please contact the City of Bellevue at [206.462.4000](tel:2064624000).

For more information, please contact the City of Bellevue at [206.462.4000](tel:2064624000).

Issaquah Clean Buildings Incentive Program

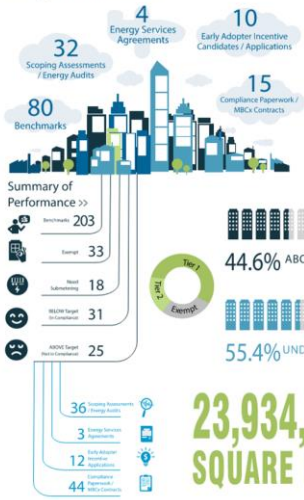


MacDonald-Miller
FACILITY SOLUTIONS

4

Community Benefits

Program Goals



Program Impact



Community Benefit

Belleuve's \$0.19 investment provides \$94 in community benefit by removing CO₂e from building emissions.

Financial Benefit

\$375 in Savings For Every \$1 Invested by City

City Cost per Building per Average Savings Identified



\$4.67 Million
in Identified Savings

Environmental Benefit

Based on 19 participants implementing identified energy improvements, Belleuve will reduce greenhouse gas emissions by:

3,374 METRIC TONS CO₂

Equivalent to:

154,923
Trees

or

379,604
Gallons of Gas (Annually)



Why Join a Clean Buildings Incentive Program

- ✓ #1 Fully-Fund your **BENCHMARKING TASK AND PROVIDE TECHNICAL GUIDANCE ON NAVIGATING INCENTIVE ACQUISITION AND YOUR COMPLIANCE PATH.**
Estimated value of benefit = \$18,000
- ✓ #2 Recognition as a **CLEAN BUILDINGS AMBASSADOR** on City website with project spotlight.

HOW DO YOU APPLY?

Scan Here to Get Started



IMPORTANT CONSIDERATIONS...

(1) State Incentive is first come, first served

Belleuve Clean Buildings Incentive Program



Issaquah Clean Buildings Incentive Program



Program Ambassador Highlight

SMARTCAP - Evergreen Office Park Buildings 1&2 - Total sqft: 103,919

FINANCIAL HIGHLIGHTS:

Project Total: \$1,990,940
 Owner Capital Needed: \$864,226 (33% of project total)
 • Remaining Balance funded by \$1,335,714 in Energy & Operational Savings

Performance Contracting - The #1 Profitable Pathway for HVAC Upgrades

• Net Present Value: \$1,133,201
 • Internal Rate of Return: 18.62%

10-year Performance Guarantee with a 5-year Pay-for-Performance incentive from PSE totaling \$150,000

SCOPE OF WORK:

- Phase I included replacing switchgear (additional \$150K)
- Replaced (13) Heat Pumps
- Upgraded (61) VAVs
- Replaced (2) Rooftop Units
- Replaced (1) Cooling Tower and pumps
- Upgraded an entire hydronic loop system from PVC to copper through building and mechanical room
- Upgraded HVAC controls on all Heat Pumps, VAVs, and major equipment
- All interior and exterior lights upgraded to LED technology
- Added lighting controls resulting in 264 low voltage light switches and occupancy sensors being integrated into building automation system for centralized management



7

Providing a Path to Compliance



CERTIFIED BENCHMARKS



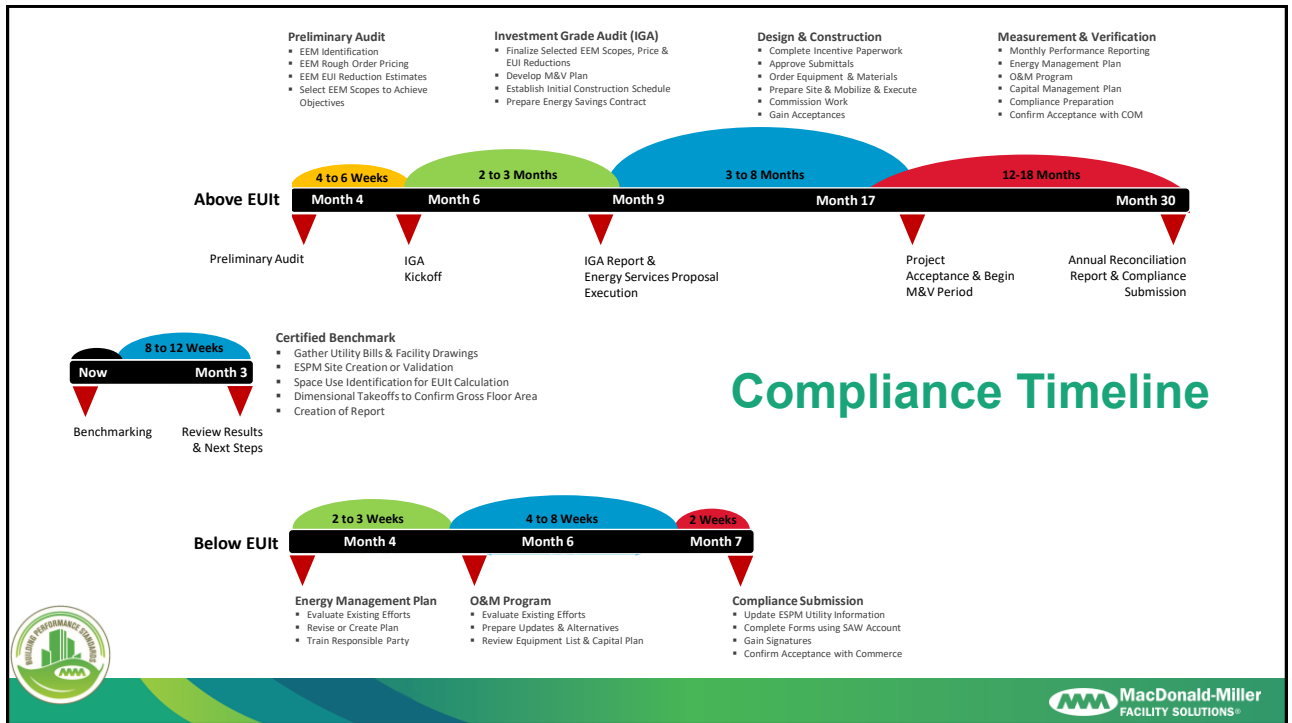
ENERGY MANAGEMENT PLAN
Preparation and/or Execution



OPERATIONS & MAINTENANCE PROGRAM
Preparation and/or Execution



8



9

Building Performance Resources

Join Those Making a Difference through a Sponsored Program

SMART BUILDINGS CENTER

The Smart Buildings Center accelerates the adoption and commercialization of smart buildings technologies and practices through education and demonstration.

WASHINGTON STATE DEPARTMENT OF COMMERCE CLEAN BUILDINGS PERFORMANCE STANDARDS

This site provides information on the Clean Buildings bill and Performance Standards.

MacDonald-Miller FACILITY SOLUTIONS

10

