



USDA Rural Development

Community Programs

AWC Infrastructure Webinar 12/15/22



Water & Environmental Programs (WEP)

Direct Loans and Grants

- Less than 10,000 population per 2010 census
- Public Bodies, Indian Tribes, non-profits (HOA, Water Associations, etc.)
- Up to 40 years, based on useful life of project with a fixed interest rate for life of loan.
Currently:
 - Poverty 2.125% if less than \$48,039 MHI AND need to alleviate health & safety
 - Intermediate 2.75% If less than \$60,049 MHI
 - Market 3.50% If over \$60,049 MHI
- Grant eligibility: 45% up to \$60,049
75% if \$48,039 or less AND necessary to alleviate health/safety concern

Water & Environmental Programs (WEP)

What Do We Fund?

Acquisition, construction, or improvement of:

- Drinking water sourcing, treatment, storage and distribution
- Sewer collection, transmission, treatment and disposal
- Solid waste collection, disposal and closure
- Stormwater collection, transmission and disposal
- Land acquisition, water and land rights, permits and equipment related to any of the above

3

Water & Environmental Programs (WEP)

ECWAG – Emergency Community Water Assistance Grant

- Helps Communities recover from an emergency that threatens the availability of safe, reliable drinking water
- Not dependent on federal disaster declaration
- Up to \$150,000 for transmission and disbursement lines and equipment
- Up to \$1,000,000 for construction or repair water source, intake or treatment facility
- Grant eligibility: 45% up to \$60,049
 75% if \$48,039 or less AND necessary to alleviate health/safety concern

4

Water & Environmental Programs (WEP)

PPG – Predevelopment Planning Grants

- Assists low-income communities with initial planning and development of applications for RD water and waste direct loan/grant and guaranteed loans
- Maximum of \$30,000 or 75% of the project cost, whichever is lower

SEARCH – Special Evaluation Assistance for Rural Communities and Households

- Same purpose as PPG and:
 - Less than 2,500 population
 - MHI is \$48,039 or less
 - Maximum of \$30,000 with no matching funds required

5

Water & Environmental Programs (WEP)

Accessing Rural Development WEP Funding

- Contact us early and often
- Cradle to grave
- Online application process
- Partners that can help
 - RCAC
 - Evergreen Rural Water
 - Other state and federal funders

6

Community Facility Program (CF)

Direct Loans and Grants

- Less than 20,000 population per 2010 census
- Public Bodies, Indian Tribes, non-profits (HOA, Water Associations, etc.)
- Up to 40 years, based on useful life of project with a fixed interest rate for life of loan which is currently 3.5% and changes quarterly
- Some projects eligible for some grant funding

7

Community Facility Program (CF)

What Do We Fund?

Acquisition, construction, or improvement of essential community facilities including, equipment, vehicles, etc. for:

- Health Care: Hospitals, clinics, nursing homes, assisted living facilities
- Public Facilities: Town halls, courthouses, street improvements
- Community Support Services: childcare, community centers, fairgrounds, transitional housing, food banks
- Public Safety: fire departments, police departments, prisons, public works
- Educational: museums, libraries, schools

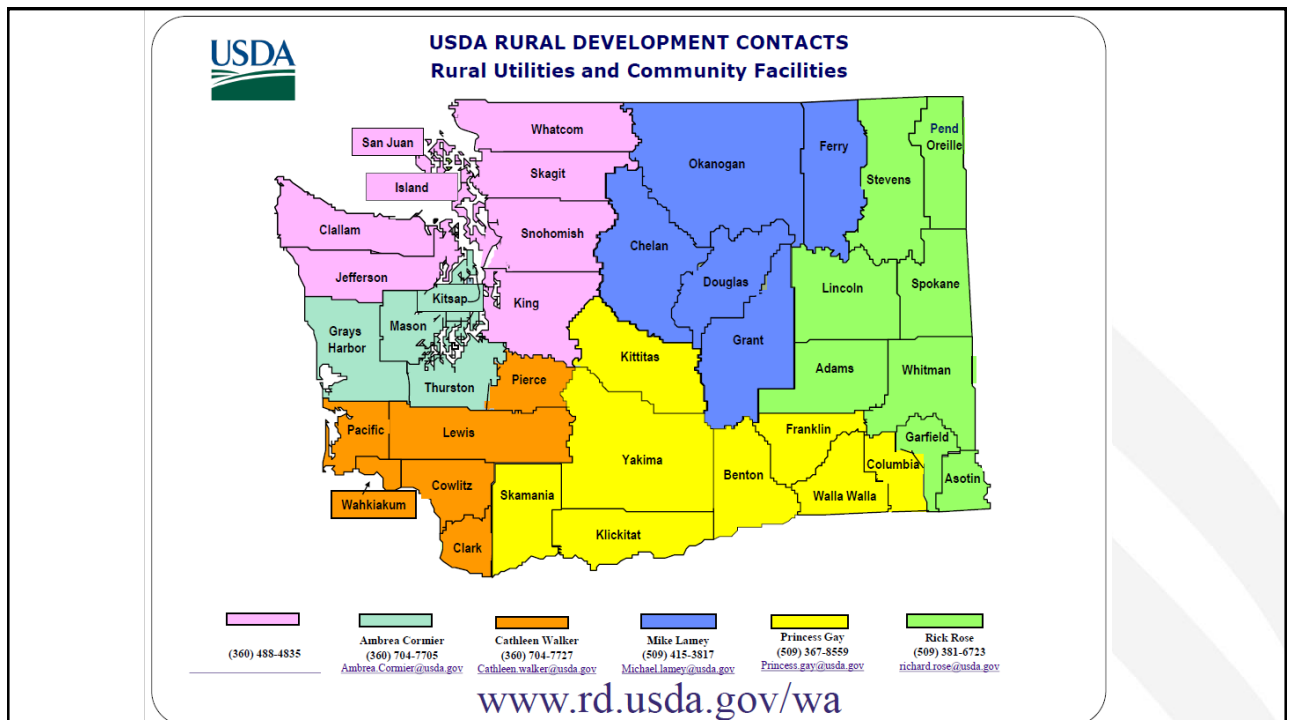
8

Community Facility Program (CF)

Accessing Rural Development CF Funding

- Contact us early and often
- Cradle to grave
- Preapplication conference and processing
- Longer processing times for start ups
- Feasibility studies for larger projects

9



10

More Contact Information

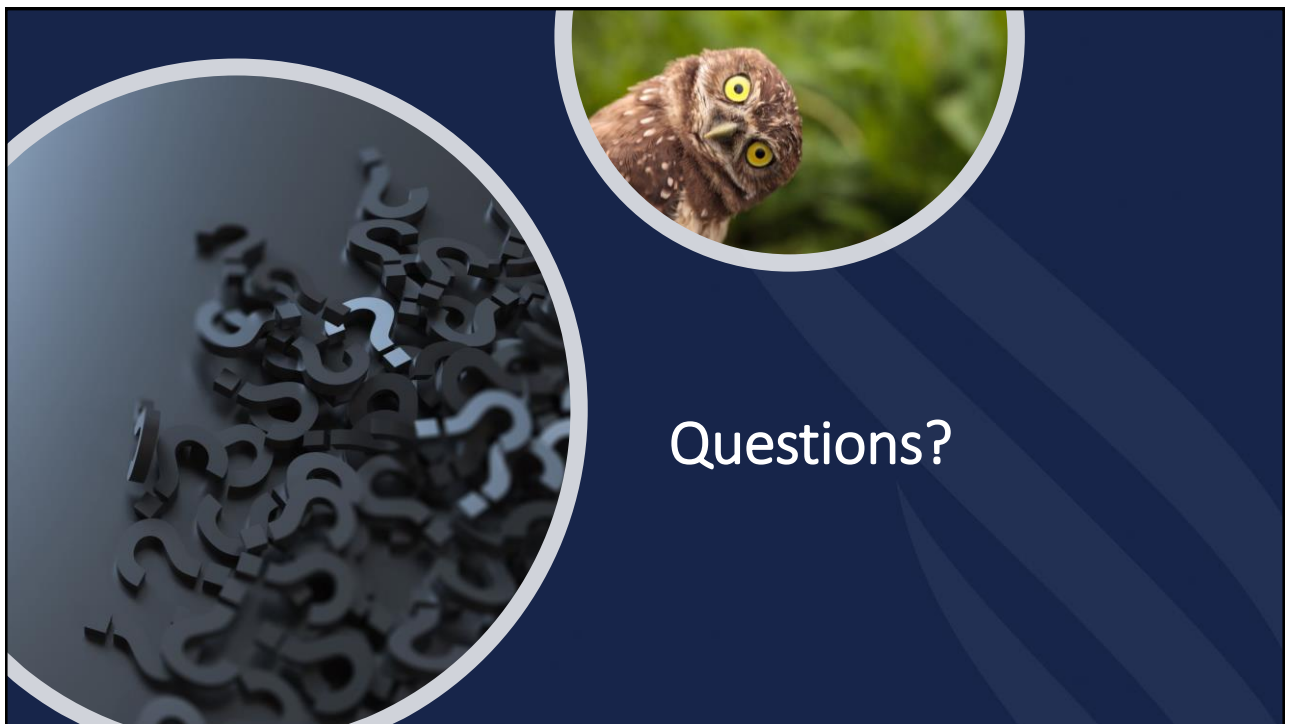
Koni Reynolds
Community Programs Director
360-704-7737
Koni.Reynolds@usda.gov

Marti Canatsey
State Loan Specialist
509-367-8570
Marlene.Canatsey@usda.gov

Betsy Dillin
State Engineer
360-704-7739
Elisabeth.dillin@usda.gov

Tami Champagne
State Environmental Coordinator
360-704-7761
Tamara.champagne@usda.gov

11



12

