



MUNICIPAL COURT: COURTS OF THE FUTURE 2021

Cheryl Selby, Mayor, Olympia
Scott Ahlf, Judge, Olympia
Michelle Gehlsen, Judge, King County

1

Zoom meeting technical tips

- Please **submit questions for the speaker** via the **Chat feature**
- You can also use the **Chat feature** for any **technical issues** or questions



Select **Chat**, type your question or comment into chat pane, and hit **Enter**.



2

Disclaimer

Disclaimer: The information contained in this presentation is for general educational purposes only and is not intended to be legal advice. Please consult legal counsel for advice about specific questions.



Guest Judges

- Judge Douglas Fair
- Judge Rebecca Robertson
- Judge Fred Gillings
- Judge Charles Short
- Judge Drew Henke
- Judge Kara Murphy Richards
- Judge Mary Logan
- Judge Lisa Mansfield
- Judge Whitney Rivera

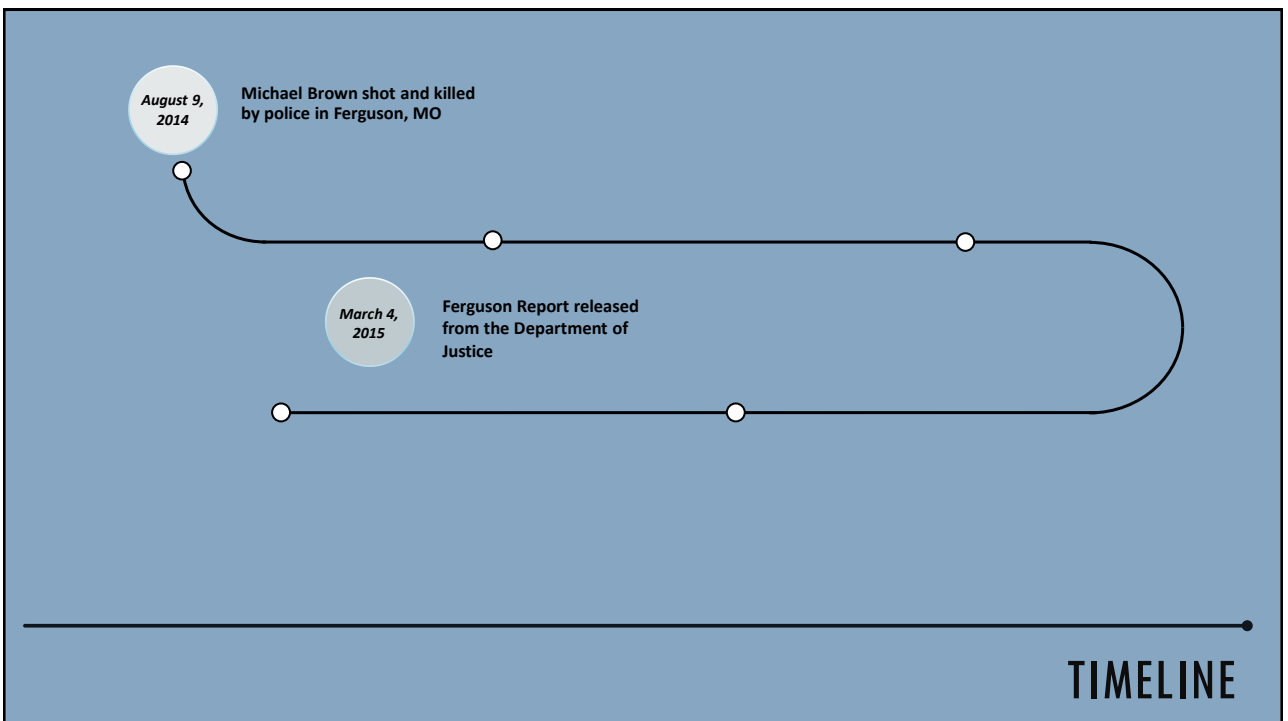




MUNICIPAL COURT: COURTS OF THE FUTURE 2021

Cheryl Selby, Mayor, Olympia
Scott Ahlf, Judge, Olympia
Michelle Gehlsen, Judge, King County

5



6

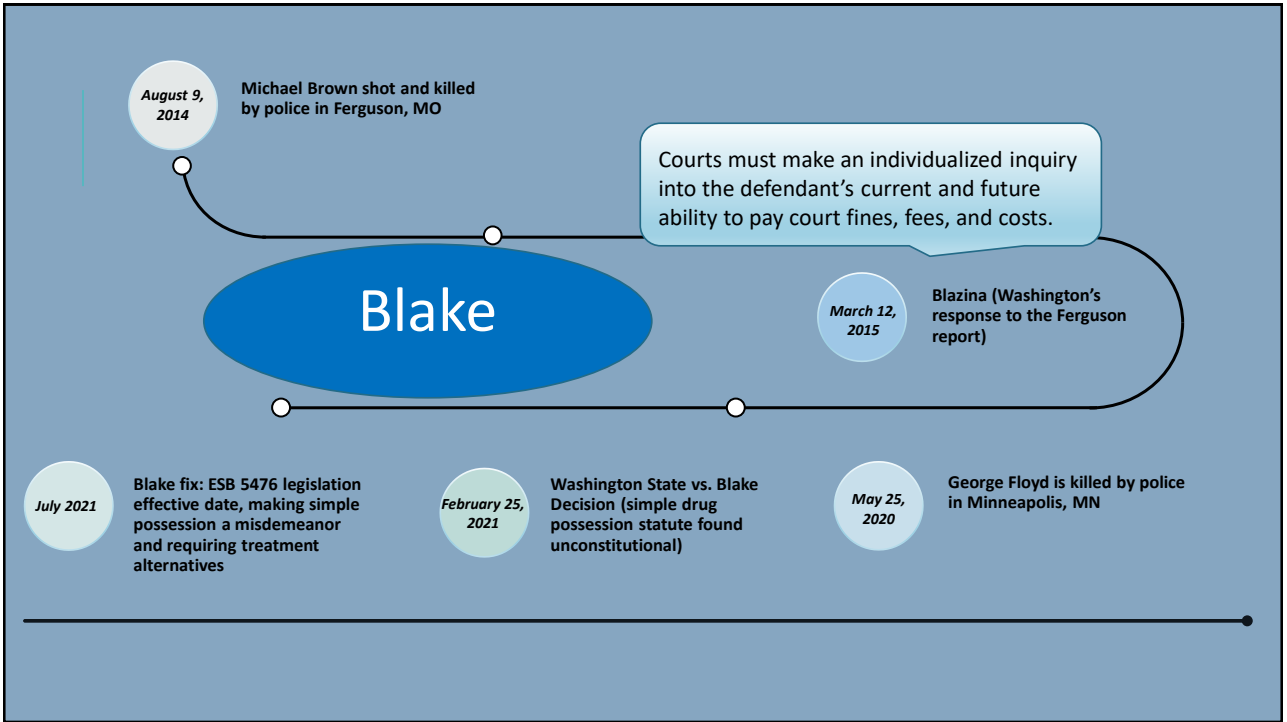


7

DEPARTMENT OF JUSTICE: FERGUSON REPORT

“Ferguson has allowed its focus on revenue generation to fundamentally compromise the role of Ferguson’s Municipal Court.”

8



9

BLAKE BREAKOUT ROOMS

What are the **impacts** from Blake to your city?

Do you see any **opportunities**?

Do you see any **collaborations** from Blake?

iDEA iDEA

BEST
iDEA

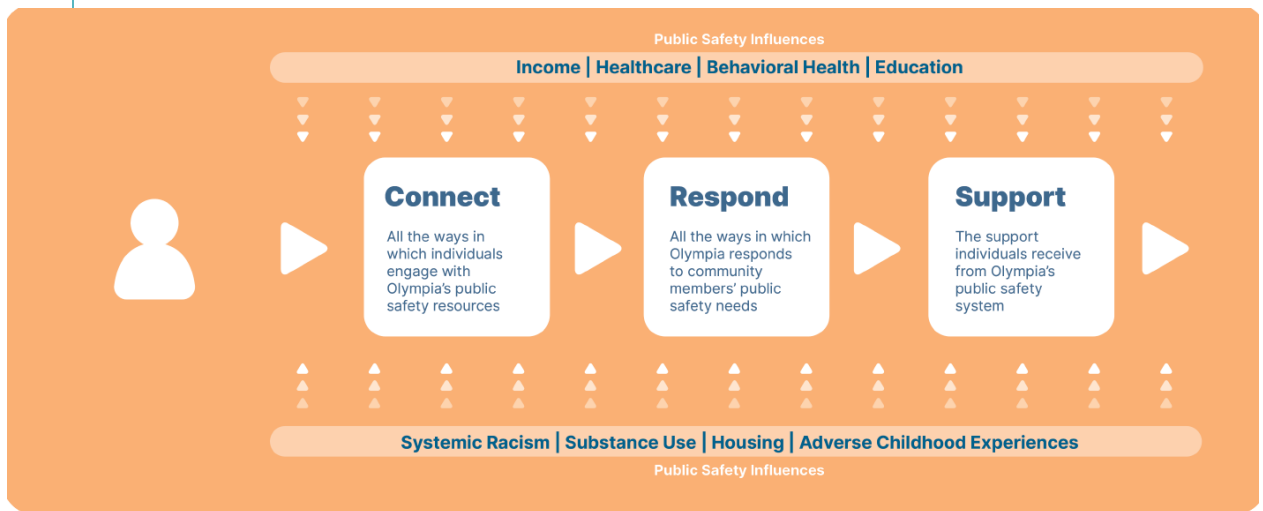
10

- In November 2017 the Olympia community voted yes on a Public Safety Levy.
- Passage of the Levy allowed the Olympia Police Department to:
 - Enhance Downtown Walking Patrol
 - Establish a Neighborhood Liaison
 - Continue contemporary police training and recruitment
 - Establish Crisis Response Services



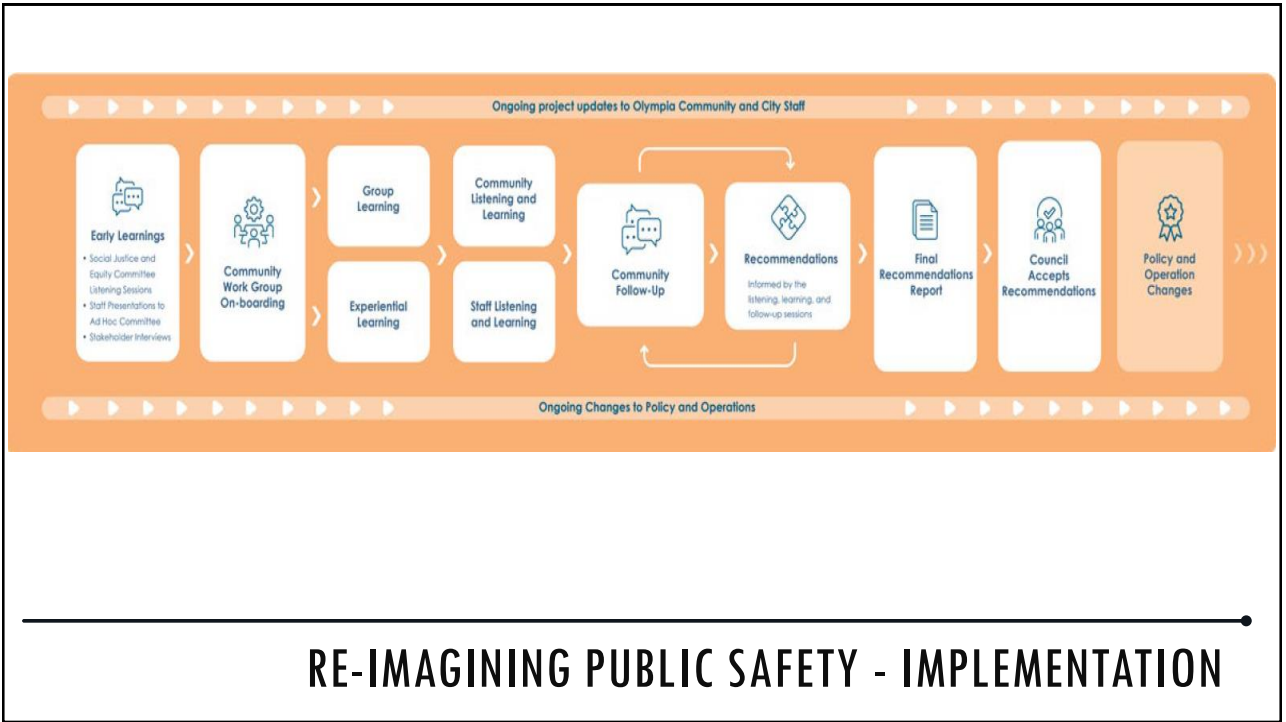
PUBLIC SAFETY LEVY

11



RE-IMAGINING PUBLIC SAFETY — PROJECT SCOPE

12



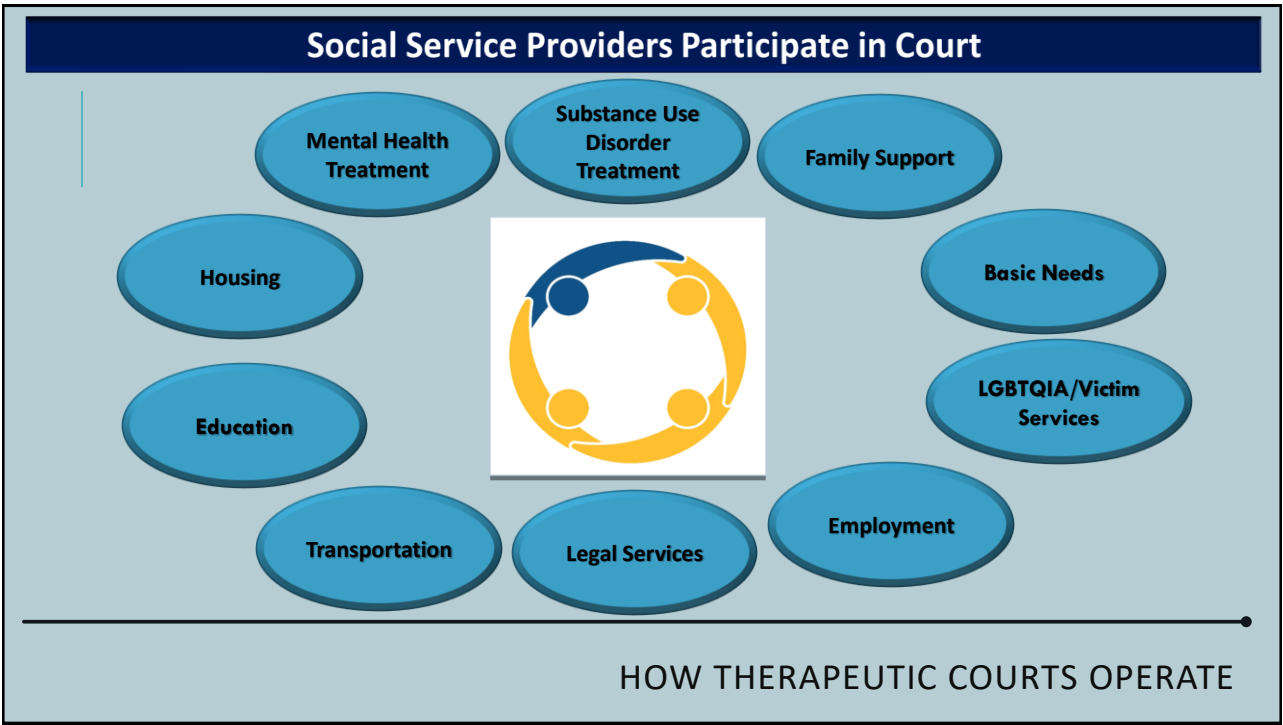
13



14

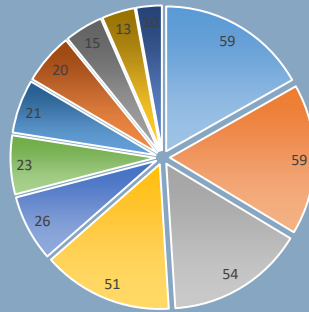


15



16

1. Housing 59%
2. Mental Health 59%
3. Drug and Alcohol 54%
2. Employment 51%
3. Transportation 26%
4. Basic Needs/Healthcare 23%
5. Social Services 21%
6. Education 20%
7. Family Support 15%
8. LGBTQIA/Victims Services 13%
9. Legal Services 10%



SOCIAL SERVICE NEEDS OF PARTICIPANTS

17

From Jan 2016 to May 2021 Olympia Community Court had 465 participants and 205 graduates

As of January 2021, 81% of graduates have not been convicted of new offenses, which is a 19% recidivism rate. The national average rate of recidivism is 45-50%

They give back to the community with community service and work crew.

PARTICIPANT ACHIEVEMENTS

18

FUTURE OF COURTS

Working together to achieve success



Breakout Rooms

19

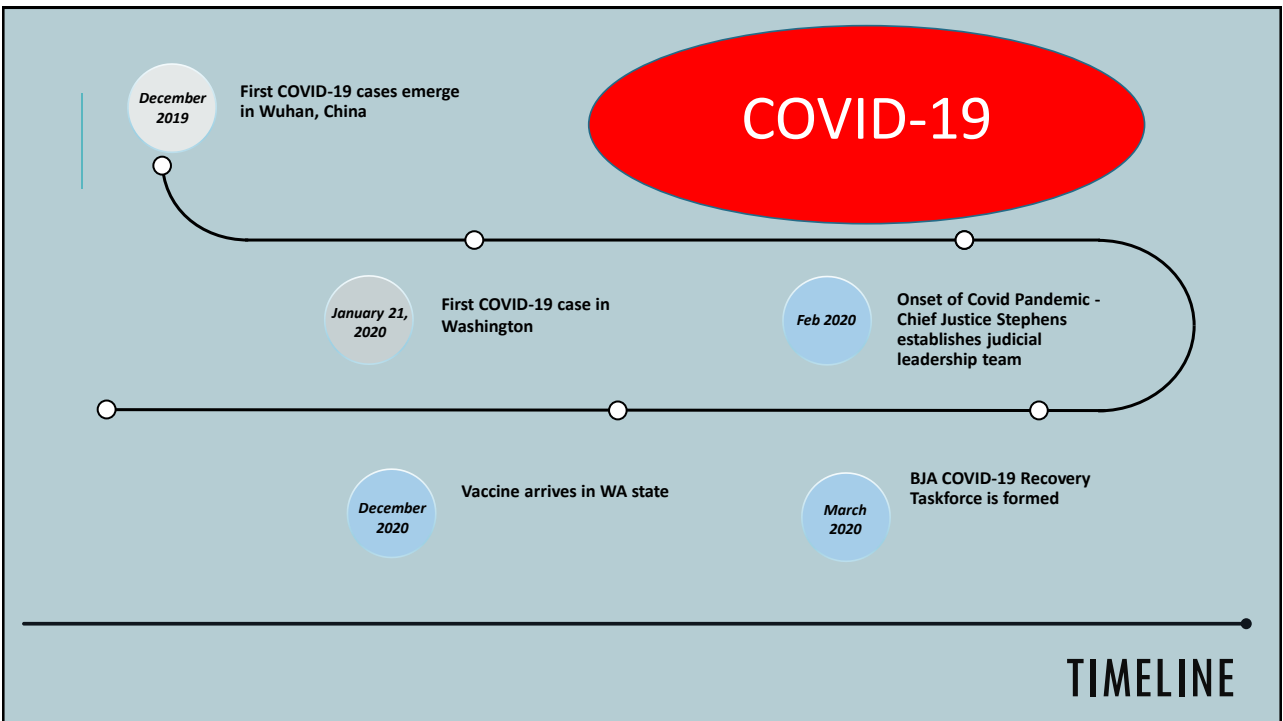


**ADMINISTERING JUSTICE
IN A COVID 19 WORLD –
WASHINGTON MUNICIPAL COURTS REMAIN OPEN
TO ADMINISTER JUSTICE**

20



21



22

COVID-19 IMPACTS ON WASHINGTON MUNICIPAL COURTS

- Preparation and Perception of Safety
- Personal Protective Equipment
- Vaccines
- Technology
- Jury Trials
- Court Rule/Legislation Amendments



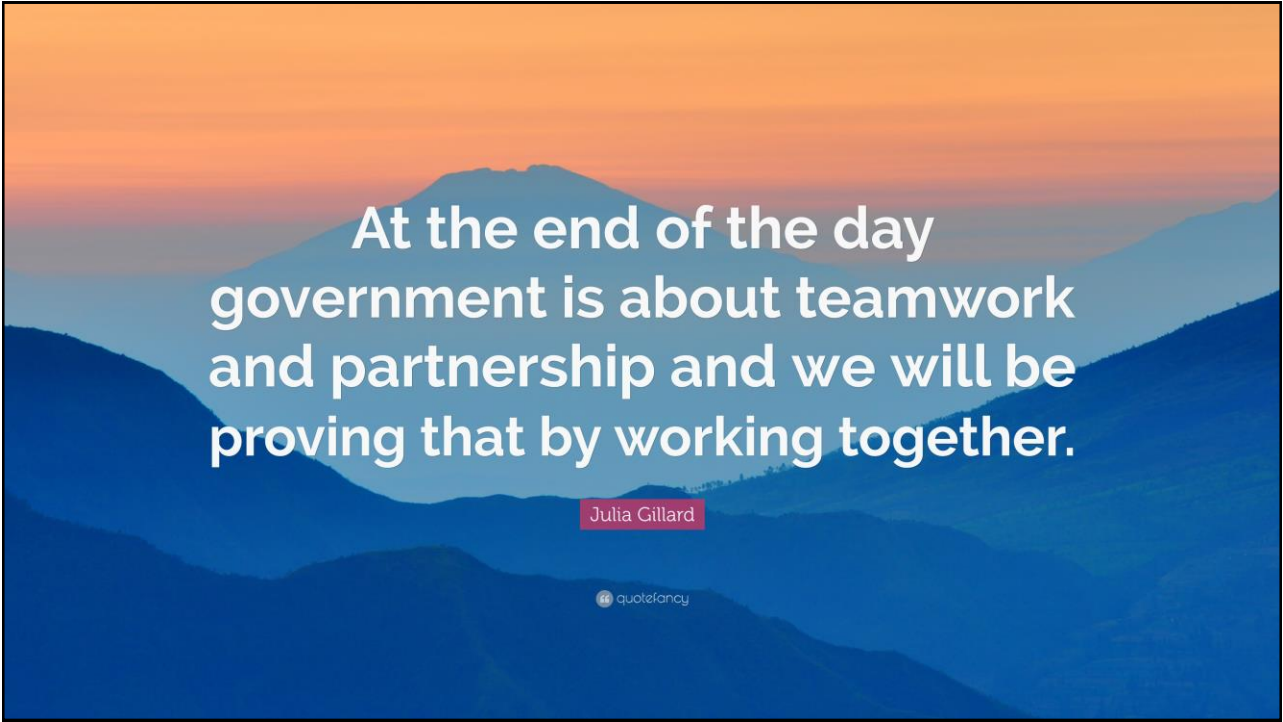
23

COMMUNICATION COOPERATION COORDINATION NEXT STEPS

1. BLAKE FUNDING
2. TECHNOLOGY
3. SAFETY AND SECURITY



24



At the end of the day
government is about teamwork
and partnership and we will be
proving that by working together.

Julia Gillard

 quote fancy