

Introduction to the USDA & Overview of Rural Utilities Service Programs

Association of Washington Cities
Virtual
November 1, 2022

Presented by:
John Holman, General Field
Representative OR/WA



1

Rural Development's (RD) Mission

USDA Rural Development

Committed to helping improve the economy and quality of life in rural America.

- Provide **loans, grants, and loan guarantees** that support essential services, such as:
 - Housing
 - Economic Development
 - Health Care
 - First Responder Services and Equipment
 - Water, Electric, and **Telecommunications Infrastructure**



Page 2

2

Funding for Rural Broadband

- Telecommunications Infrastructure Loan Program
- Community Connect Grant Program
- ReConnect Program (Rural eConnectivity Program)
- Distance Learning & Telemedicine Grant



3

Telecommunications Infrastructure Loan Program

Funding Type	Rural Focus	Funding Thresholds	How to Apply	When Applications are Accepted
Loans/Loan Guarantees	Primarily benefits communities ≤5K	N/A	Submit through the RD Apply online application system	Year-round

Available Funding

FY2019
\$690 million available

FY2020
\$690 million available

FY2021
\$690 million available

Program Updates

FY2019
12 loans approved: **\$181.5 million**/10 states impacted

FY2020
8 loans approved: **\$98.6 million**/10 states impacted

FY2021
2 loans approved: **\$57.5 million**/1 state impacted
7 loans in process: **\$84.8 million**

<https://www.rd.usda.gov/programs-services/telecommunications-infrastructure-loans-loan-guarantees>

Page 4

4

Telecommunications Infrastructure Loan Program

Standard Loan Terms include:

- 2 Year Principal Deferral
- Interest Rate at the Cost-Of-Money
- Loan Maturity - Life of the Facilities Financed Plus 3 Years

Staff can assist and review loan applications before submission

5

Community Connect Grant Program

Funding Type	Rural Focus	Funding Thresholds	Matching Requirement	Broadband Service Speeds	How to Apply	When Applications are Accepted
Grants	Areas with populations ≤ 20K	\$100,000 - \$3,000,000	15% of requested grant amount	Broadband Service: <10/1 Mbps Broadband Grant Speed: ≥25/3 Mbps	Submit through the Community Connect Portal	Applications are not accepted at this time

Available Funding

FY2019
\$33 million available

FY2020
\$29 million available in FY2020 after awarding 8 grants from FY2019 application cycle

FY2021
\$35 million available

Program Updates

FY2019
12 grants approved: \$24.3 million/9 states impacted

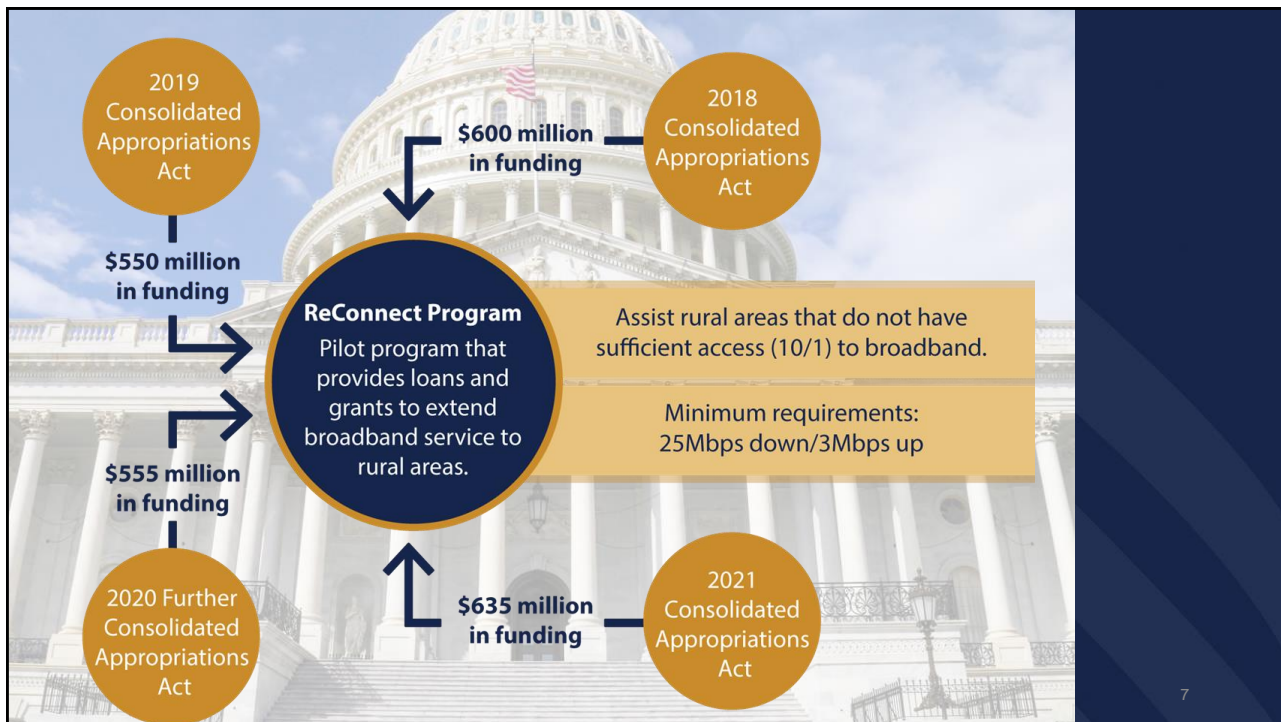
FY2020
8 grants approved: \$15.7 million (from the FY2019 Application window)/7 states impacted

- No FY2020 application window due to regulation update

FY2021
Application window closed on December 23, 2020
73 Applications received: \$146.4 million

<http://www.rd.usda.gov/programs-services/community-connect-grants>

6



7

Funding Types

	100% Loan	50% Loan-50% Grant Combination	100% Grant	100 Percent Grant for Alaska Native Corporations, Tribal Governments, Colonias, Persistent Poverty Areas and Socially Vulnerable Communities	Projects serving areas where 90% of households lack sufficient access to broadband
Terms	Max Award: \$50 million Minimum Award: \$100,000 2% Interest Rate	Max Award: \$50 million Minimum Award: \$100,000 UST Interest Rate	Max Award: \$25 million* Minimum Award: \$100,000 Award: \$100,000 25% matching funds	Max Award: \$25 million* Minimum Award: \$100,000 No matching fund requirement**	Max Award: \$25 million Minimum Award: \$100,000 No matching fund requirement**
Application Review	First come, First served	Competitive	Competitive	Competitive	Competitive
Round 4 Federal Funds	\$150 million	\$300 million	\$150 million	\$350 million	\$200 million
Buildout Speed	100 Mbps symmetrical service to every premise in the PFSA.				

*Applicants may request up to \$35 million by providing supporting information that demonstrates that the PFSA(s) is comprised 100 percent of locations within areas classified by the USDA Economic Research Service as FAR Level 4.

**If the applicant is a Tribal Government (or a corporation wholly owned by a Tribal Government) or an Alaska Native Corporation proposing to provide services on its own lands there is no requirement for matching funds. Additionally, if at least 75% of the geographic area of an applicant's PFSA consists of Socially Vulnerable Communities, Persistent Poverty Counties, or Colonias there is no matching fund requirement.

Page 8

8

ReConnect Program

Funding Type	Rural Focus	Funding Thresholds	Matching Requirement	Broadband Service Speeds	How to Apply	When Applications are Accepted
Loan/Grants/ Loan-Grant Combinations	Areas with populations ≤ 20K	≤\$50 million for loans & loan-grant combinations ≤\$25 for grants	For grant-only: 25% of requested grant amount*	Broadband Service: <100/20 Mbps Broadband Buildout Speed: ≥100/100 Mbps	Submit through the RUS online application system	Applications are not accepted at this time

Available Funding

FY2019
\$550 million available

FY2020
\$655 million available in FY2020 (includes CARES funding)

FY2021
\$635 million available

FY2022
\$2.3 billion received in appropriations

- \$1.9 billion received in the Infrastructure Investments and Jobs Act (IIJA)
- \$436.6 million received in annual appropriations

<https://www.usda.gov/reconnect>

Program Updates

FY2019 – “Round One”
146 Applications processed: **\$1.4 billion**

- 76 active awards: **\$656 million/33 States** impacted

FY2020 – “Round Two”
172 Applications submitted: **\$1.57 billion requested**

- 105 active awards: **\$852 million/37 States** impacted

FY2021 – “Round Two” cont..
172 Applications submitted: **\$1.57 billion requested**

- 181 active awards: **\$1.5 billion/38 States** impacted

FY2022 – “Round 3”
305 Applications submitted: **\$4.8 billion requested**

Page 9

9

ReConnect Program

“Rural eConnectivity Program” regulation has been published. Highlights of the new regulation include:

- Broadband speeds, funding limits, scoring criteria, and protected areas will be announced in Federal Register notices or Funding Opportunity Announcements when new application windows are opened
- If awarded, grant funds may be used for eligible preapplication expenses in the first advance request

See [7 CFR 1740](#) published in the [Federal Register](#) on February 26, 2021 for the regulation text.

Page 10

10

FOA 3 Eligible PFSA: Key Considerations (continued)

- The mapping tool can be found on the ReConnect website (<https://www.usda.gov/reconnect>) by selecting the “Service Area Map” tile.
 - The mapping tool includes the following **eligibility** layers:
 - FAR Level 4
 - Non-Rural Areas
 - Pending Applications
 - Protected Broadband Borrower Service Areas
 - Tribal Lands

FOA 3 Eligible PFSA: Key Considerations (continued)

- **Across all four products:** For a PFSA to be eligible for funding under current FOA, except for funding category B.1.v, at least 50 percent of the households in the PFSA must lack sufficient access to broadband as defined in this FOA
- Applicants will use the marking tool on the Service Area Map to identify areas without sufficient access to broadband
- Multiple service areas will be treated as separate standalone service areas
- If any service area in a competitive application does not meet the eligibility requirements, the entire application will be disqualified

FOA 3 Eligible PFSA: Key Considerations (continued)

- Applicants must submit evidence that sufficient access to broadband **does not exist** for at least **90 percent** of the households in the PFSA, **identify all existing providers** in the PFSA, and **indicate what level of service is being provided**.
 - If any PFSA is found to have sufficient service the application will be disqualified.
 - If the applicant is applying for 100% loan, the applicant will be given the opportunity to remove the affected areas.
- Facilities proposed to be constructed with award funds must be capable of delivering **100 Mbps symmetrical service to every premises** in the PFSA.
 - This means that all premises in the PFSA must be able to receive this service at the same time.
- RUS will require all ReConnect awardees who are receiving or under consideration for other federal funding to **submit a statement certifying that the funds requested from ReConnect are not duplicative of other funding and have not been and will not be reimbursed by any other funding mechanism**.

13
Page 13

13

FOA 3 Eligible PFSA: Key Considerations (continued)

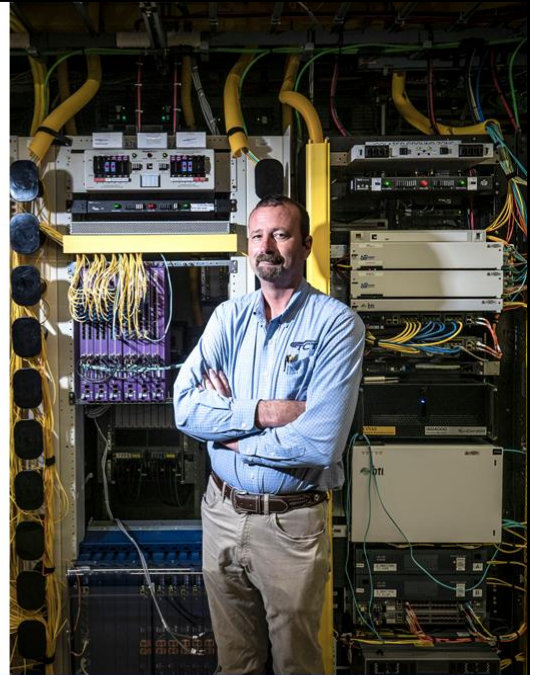
- RUS will **offer funding in areas receiving or under consideration for a Rural Digital Opportunity Fund (RDOF)** award. However, the application should explain why RUS should provide additional funding.
- RUS will require all ReConnect awardees who are receiving or under consideration for RDOF funding to **submit a statement certifying that the funds requested from ReConnect are not duplicative of RDOF funding and have not been and will not be reimbursed by RDOF funding**.
 - Recipients of RDOF and ReConnect funding must keep a separate account for ReConnect funds.

14
Page 14

14

Eligibility Requirements: Eligible & Ineligible Entities

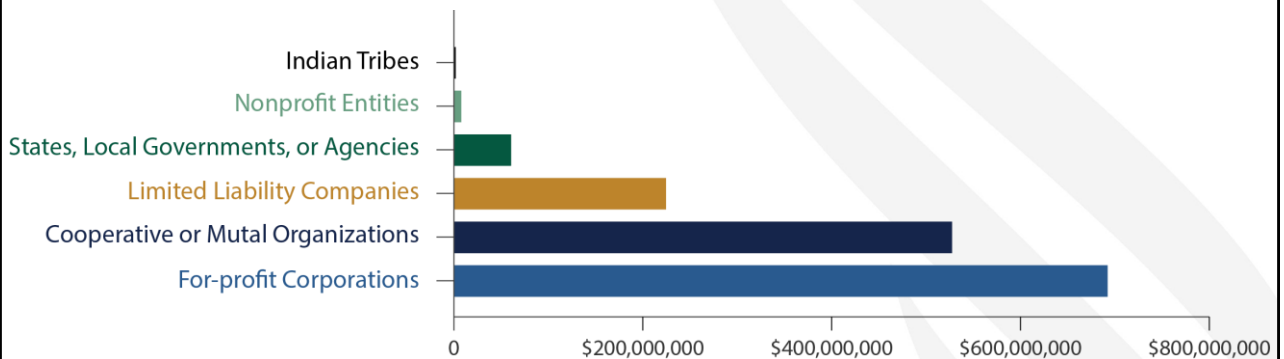
- **Eligible:**
 - ✓ Corporation
 - ✓ Limited Liability Company (LLC) and Limited Liability Partnership (LLP)
 - ✓ Cooperative or mutual organization
 - ✓ States or local governments, including any agency, subdivision, instrumentality, or political subdivision thereof
 - ✓ Territory or possession of the United States
 - ✓ Indian tribe, as defined in section 4 of the Indian Self-Determination and Education Assistance Act
- **Ineligible:**
 - ✗ Individuals
 - ✗ Legal partnerships formed with individuals
 - ✗ Co-applicants



15

15

Rounds 1 & 2: Awarded Amount by Entity Type



Total Awarded Amount: \$1,509,997,454

16

16

Eligible Projects

- **Eligible projects must:**

- Submit a complete application, including **unqualified, comparative, audited financial statements** for the previous year from the date the application is submitted
- **Timely Buildout Completion** within **five years** from the date funds are first made available
- Demonstrate **Technical Feasibility**
- All project costs can be **fully funded** or accounted for
- **Financially Feasible and Sustainable**
- Facilities with grant funds must **provide broadband service for the composite economic life of the facilities**
- Facilities with loan funds must **provide broadband service through the amortization period of the loan**

17
Page 17

17

Distance Learning and Telemedicine Program

18

Distance Learning & Telemedicine Grant Program – The Basics

Funding Type	Rural Focus	Funding Thresholds	Matching Requirement	DLT System	How to Apply	When Applications are Accepted
Grants	Primarily benefits rural areas	\$50,000 - \$1,000,000	15% of requested grant amount	Must include hub and end-user sites	Submit through the Grants.gov	Applications are not accepted at this time

Available Funding

FY2019

\$64 million available

FY2020

\$95 million available

FY2021

\$57 million available

Program Updates

FY2019

181 applications received for \$58.1 million

- 145 grants approved for \$45.4 million

FY2020

FOA #1: 276 applications received for \$155.9 million

- 117 grants approved for \$72.4 million

FY2021

FOA #2 (from FY2020): 534 applications received for \$252.1 million

- 87 grants approved for \$42.3 million

<https://www.rd.usda.gov/programs-services/distance-learning-telemedicine-grants>

19

Page 19

19

Distance Learning & Telemedicine Grant Program

Distance Learning means the real-time, interactive delivery of curriculum via telecommunications and promotes the connection of students and teachers at remote sites.

- Provide educational programs, instruction, or information originating in one area, whether rural or not, to students and teachers who are located in rural areas; or
- Connect teachers and students, located in one rural area with teachers and students who are located in a different rural area.

Telemedicine is a real-time, interactive, telecommunications link to an end user from medical professionals at separate sites in order to exchange health care information for the purpose of providing improved health care services to residents of rural areas.

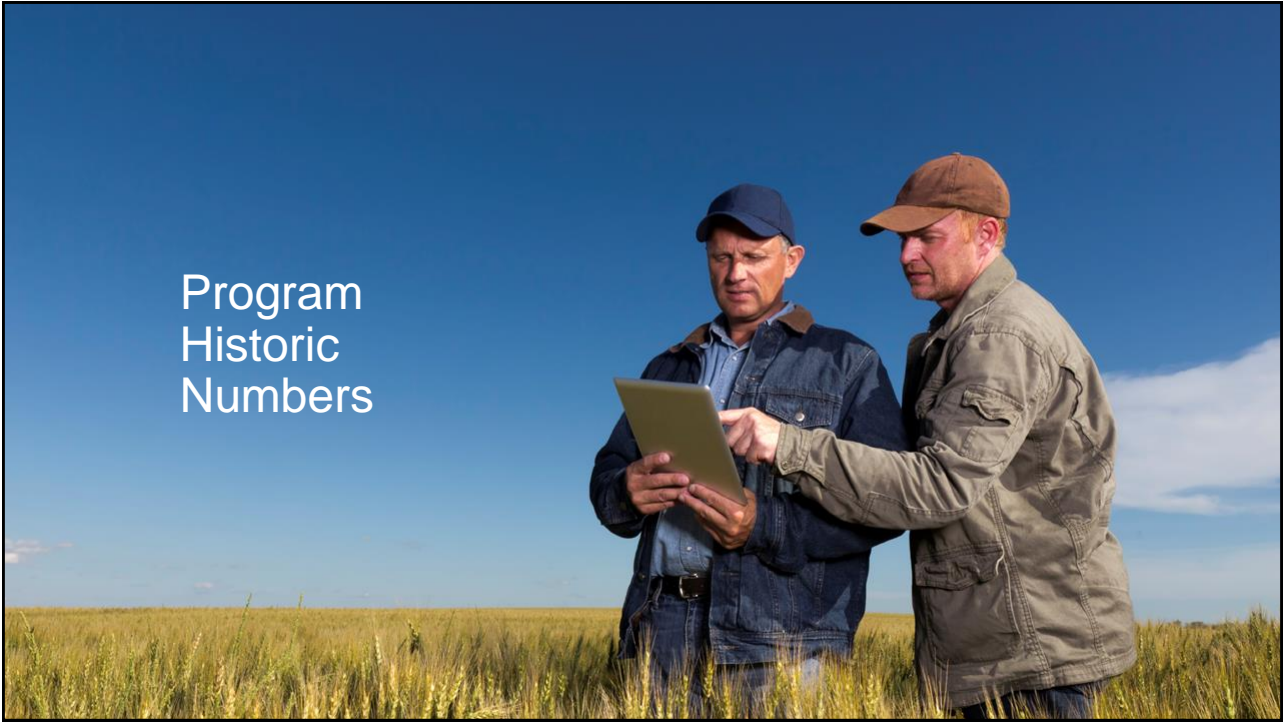
- Benefits rural residents both in reduced travel and improved access to service

20

Page 20

20

Program Historic Numbers



21

Telecommunications Programs –Oregon Investments

Since 2010, RUS has approved over \$74 million in projects serving OR Rural residents:

Program	Funds Approved
Telecommunications Infrastructure Program	\$44.0 Million
ReConnect Program	\$6.0 Million
Distance Learning and Telemedicine Program	\$3.6 Million
Community Connect Grant Program	
Broadband Initiatives Program	\$20.0 Million
Grand Total	\$74.0 Million

Page 22

22

Telecommunications Programs –Washington Investments

Since 2010, RUS has approved over \$125 million in projects serving Washington residents:

Program	Funds Approved
Telecommunications Infrastructure Program	\$75.0 Million
ReConnect Program	\$2.0 Million
Distance Learning and Telemedicine Program	\$6.5 Million
Community Connect Grant Program	\$3.6 Million
Broadband Initiatives Program	\$36.0 Million
Grand Total	\$125.0 Million

Page 23

23

Telecommunications Programs – All State Investments

Since FY2010, RUS has approved over \$8 billion in funding for broadband and distance learning and telemedicine projects that serve rural residents.

Program	Projects Approved	Funds Approved
Telecommunications Infrastructure Program	195	\$3.2 Billion
ReConnect Program	165	\$1.3 Billion
Rural Broadband Access Program	10	\$273.4 Million
Distance Learning and Telemedicine Program	1,155	\$409.0 Million
Community Connect Grant Program	111	\$185.0 Million
Broadband Initiatives Program	258	\$2.9 Billion
Grand Total	1,894	\$8.3 Billion

*Table shows award data at time of obligation for all programs except ReConnect and BIP, which show present award data.

Updated: 3/2/2021

Page 24

24

Telecommunications Programs – Tribal Investments – All States

In FY 2018 and 2019, RUS approved approximately \$20.3 million in telecommunications projects serving Tribal Lands, Tribal Organizations, American Indians, and Alaska Natives.

Program	Funds Approved
Telecommunications Infrastructure Program	\$9.8 Million
Distance Learning and Telemedicine Program	\$7.1 Million
Community Connect Grant Program	\$3.4 Million
Grand Total	\$20.3 Million

Updated: 03/13/2020

Page 25

25

USDA Rural Development
U.S. DEPARTMENT OF AGRICULTURE

John Holman
General Field Representative
john.holman2@usda.gov
Office: 503-414-3369

Rural Development | Rural Utilities Service
Telecommunications Program
U.S. Department of Agriculture
1400 Independence Ave., S.W.
Washington, D.C. 20250
www.rd.usda.gov



26