



# Wildfire Resiliency

Association of Washington Cities

Emergency Management Forum 2025

Fall 2025

1

## STRENGTHENING COMMUNITIES



Our **Mission** is to enable vibrant communities through energy. **Safely. Responsibly. Affordably.** We put those we serve at the center of everything we do.

Our **Purpose** goes beyond providing the energy that powers the daily lives of our customers. We're here to improve the quality of life and to enhance the strength, health, and vitality of the communities we serve, and the communities we call home.



2

1



3



## Guarding against growing risks

Avista continues our commitment to keeping people and property safe. In 2020, we began implementing our 10-year Wildfire Resiliency Plan for preventing, mitigating and reducing the impact of wildfires.

We believe this is a wise investment geared toward safety and preparedness for the communities we serve and call home.



4

# Our Four-Part Plan Includes:



## 1. Grid Hardening

- Gradual Shift to Strategic Undergrounding
- Wood to Steel Pole Change-out
- Pole Mesh
- Conductor Enhancement



## 2. Enhanced Vegetation Management

- 100% inspection of Risk Trees annually



## 3. Situational Awareness

- AI Fire Detection Cameras
- Weather Station Installations for Real-Time Data



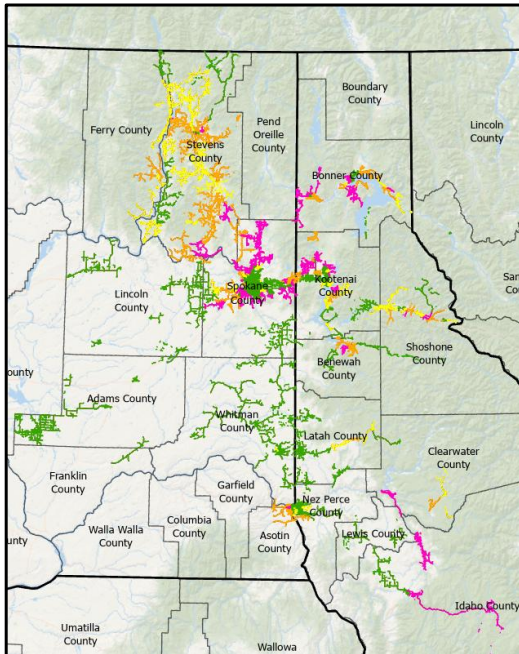
## 4. Operations and Emergency Response

- Expanded fire protection settings
- Public Safety Power Shutoff (PSPS)



5

# System Overview



ID Electric Customers	WA Electric Customers	Total
133,243	205,433	338,676
ID Service Area Pop.	WA Service Area Pop.	Total
351,586	903,982	1,255,568

Wildfire Risk	ID (miles)	WA (miles)	Total
Tier 0	1,180.8	2,669.5	3,852.7
Tier 1	349.3	779.5	1,128.9
Tier 2	418.2	1,056.3	1,474.5
Tier 3	619.4	651.9	1,271.3
Totals	2,567.7	5,157.1	7,727.3

6

# Building Resiliency

*Improving System Resiliency, Safety, and Reliability*



**Strategic Undergrounding**



**Automation**



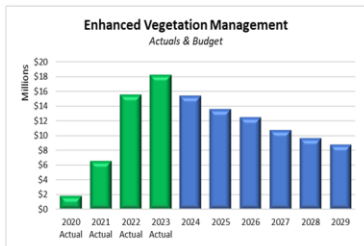
**Transmission**



7

# Reducing Vegetation Risk

*Enhanced Vegetation Management Practices*



**Customer Partnerships**

**Agency Partnerships**

**Technology**



**100% Risk Tree Inspection & Removal**



8

# Fuels Reduction Assistance Program

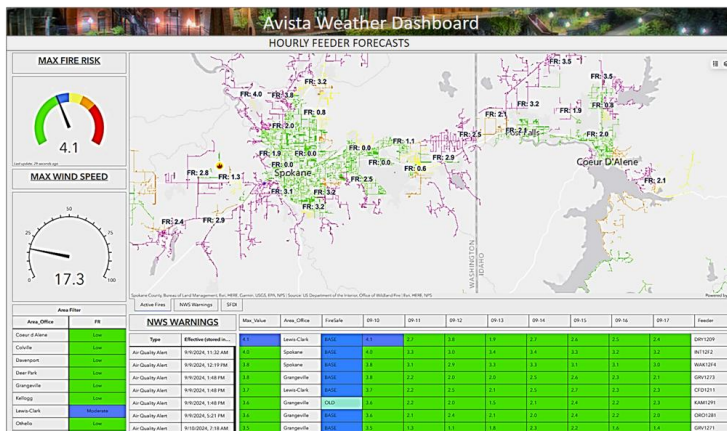
Avista has partnered with Local and State agencies to improve forest and landscape health.

- ✓ Projects reduce risk of extreme fire behavior by removing wildland fuels (brush, understory trees, limbs) or modifying the continuity of the fuels to cause fire behavior to be less extreme.
- ✓ Include mastication work with machinery, hand crews with chainsaws and chippers, pruning and limbing of trees, and even grazing with goats to remove brush and fine fuels.
- ✓ Avista reimburses agencies once work is complete that improves conditions for Avista customers and reduces fire risk.



# Increasing Wildfire Risk Awareness

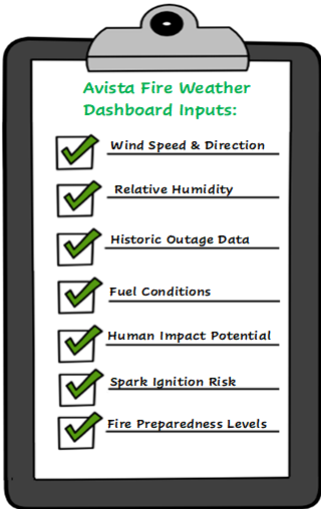
*Using Technology to Predict and Respond to Fires*



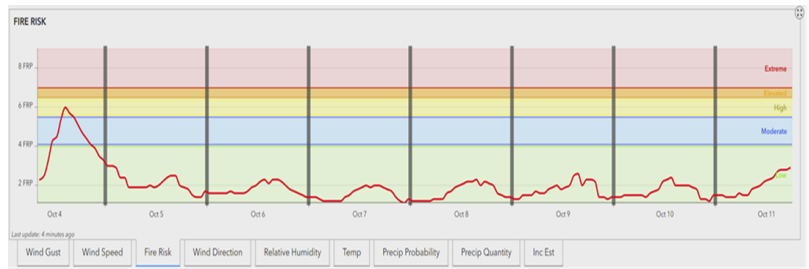
- Fire Weather Dashboard
- Customized WUI Map
- Wildfire Cameras
- Weather Stations



# Fire Safety Mode & Protection Settings



Max Value	Area Office	FireSafe	08-26	08-27	08-28	08-29	08-30	08-31	09-01	09-02	Feeder
5.8	Spokane	MSD	5.8	5.8	5.8	5.8	5.8	5.8	5.8	5.8	NT1232
5.8	Leavenworth	MSD	5.8	5.8	5.8	5.8	5.8	5.8	5.8	5.8	SBY1209
5.8	Spokane	MSD	5.8	5.8	5.8	5.8	5.8	5.8	5.8	5.8	WAK1214
5.8	Leavenworth	MSD	5.8	5.8	5.8	5.8	5.8	5.8	5.8	5.8	CFD1211
5.4	Spokane	MSD	5.4	5.4	5.4	5.4	5.4	5.4	5.4	5.4	SUN1205
5.4	Spokane	MSD	5.4	5.4	5.4	5.4	5.4	5.4	5.4	5.4	SE1214
5.2	Davenport	MSD	5.2	5.2	5.2	5.2	5.2	5.2	5.2	5.2	FOR1211
5.2	Spokane	MSD	5.2	5.2	5.2	5.2	5.2	5.2	5.2	5.2	SUN1214



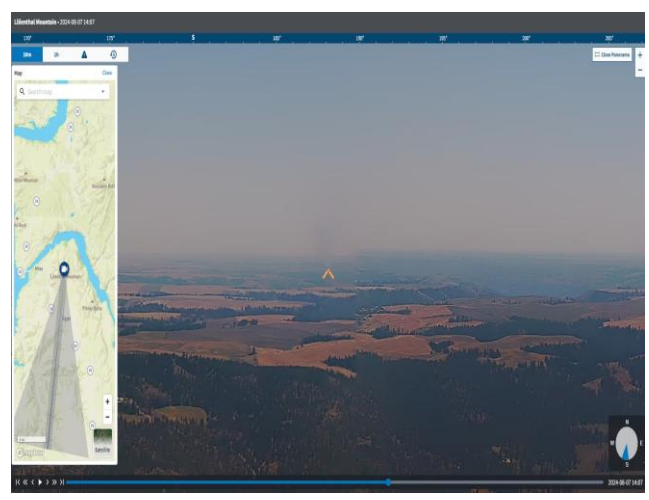
# Situational Awareness

**Weather Stations – These installations will occur across the Avista service territory**

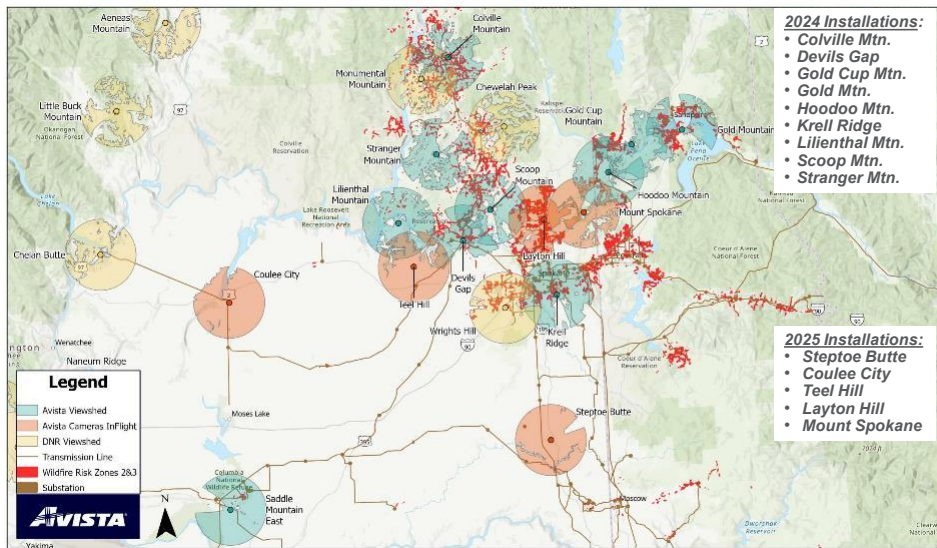
- Brings real-time/site specific data to multiple operational areas improving safety and decision making
- Increases the accuracy and timeliness of forecasts with improved coverage and increased data

**Mountain Top Cameras – Avista has installed 10 fire detection cameras across our service area; five more will be installed in 2025 in Washington**

- These cameras give Avista personnel and First Responders improved detection capability through AI detection
- Provide real time situational awareness of fire conditions, allowing fire managers to make better and more timely decisions
- Allow Avista operational personnel to determine threat to Avista assets remotely

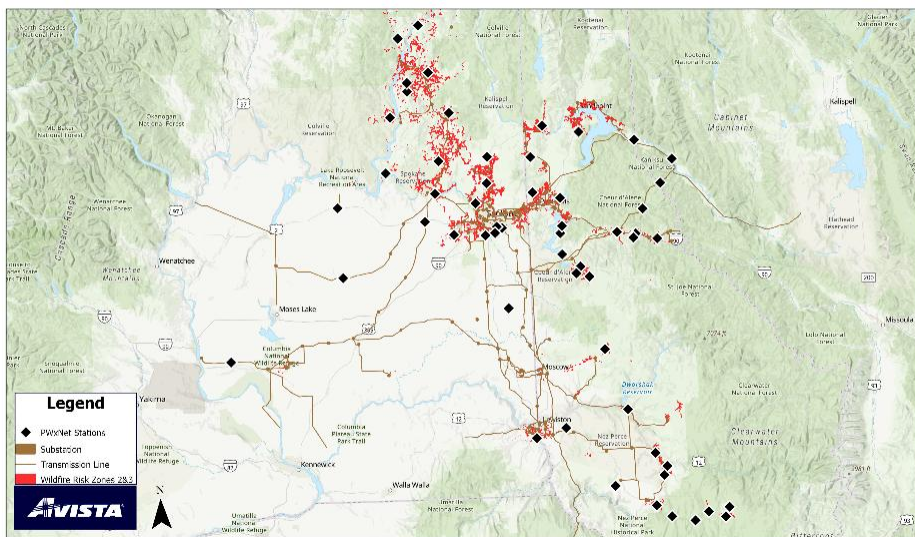


# 2025: Continue Growth of AI Camera Coverage



13

# 2025: Increase Situational Awareness with Weather Stations



14

## Operating to Reduce Risks

Reducing Risks Through Emergency Operations and Response  
- Full Range of Protection Settings



AVISTA

15

## Public Safety Power Shutoffs (PSPS)

- PSPS is **proactively** turning off power to select locations prior to extreme weather impacts
- Avista is prepared to continue to use PSPS in 2025 - as a tool of last resort
- We've developed criteria and customer support strategies necessary to implement PSPS
- **Collaboration** with public safety partners, municipalities, tribes and key stakeholders is essential

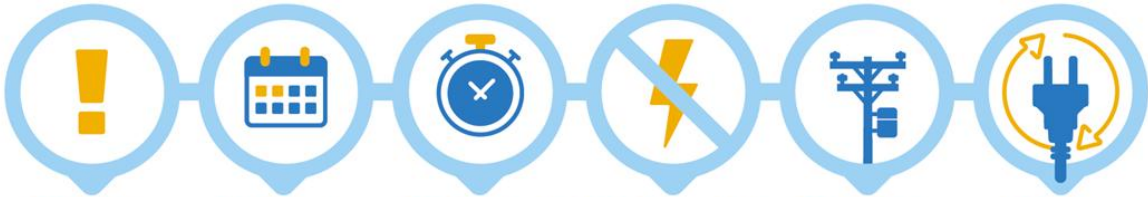


AVISTA

16

# Public Safety Power Shutoffs (PSPS)

*Timeline Developed to Ensure Customer Awareness and Protect Communities*



**PSPS Watch**

Sent when a PSPS event is possible.

**PSPS Warning**

Sent when a PSPS event is likely.

**PSPS Imminent**

Sent when a PSPS event is imminent.

**PSPS Outage Alert**

Sent when a PSPS outage begins.

**PSPS Updates**

Sent as needed and when restoration work begins.

**PSPS Over**

Sent when power has been restored.



17

# PSPS Restoration Process

*Ensuring Restoration is Done Safely and Carefully*



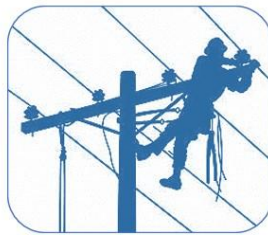
**Line Patrol:**

- “All Clear” is declared by decision-makers
- Field Crews Mobilized
- Broad Communications to Customers Including Help With Support Resources



**Restore Power:**

- Start with Critical Infrastructure, Commercial Zones with Equity Considerations
- Communicate Estimated Restoration Time to Customers



**Complete Repairs:**

- Main Trunk Lines
- Branch Lateral Circuits
- Individual Customers
- Update & Communicate Estimated Restoration Time to All



**Event Ends:**

- EOP is Declared Over
- After Action Review With Emergency 1<sup>st</sup> Responders
- PSPS Report to Regulators
- Thank You to Crews & Customers



18



19 Optional footer for data sources, etc.



19

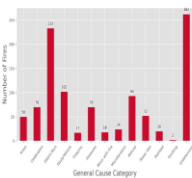
# 2025 Fire Season

## Washington DNR

## Idaho Dept of Lands

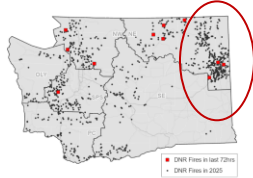
### Fire Causes

Number of DNR fires by general cause category



### Fire Locations

New fires shown in red (last 72hrs), older fires in black



### Year to Date

**347**

4,699.7 Acres

### Last 24 Hrs

**4**

0.8 Acres

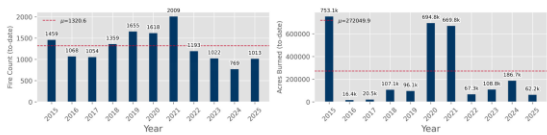
### Past Week

**27**

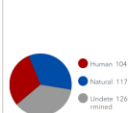
61.1 Acres

### Ten Year (Year-to-Date) Fire Statistics

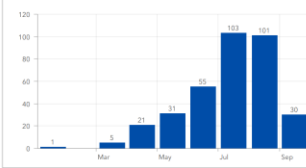
These values represent the total number of DNR fires and acres burned over the last ten years from January 1 to the date of this report. Note that the average is calculated on 2013-2023 numbers to allow for editing/finishing of 2024 statistics.



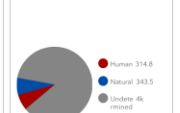
### Fires by Cause



### Fires by Month



### Acres by Cause



Statistics as of 9/8/2025



20

# Operations & Emergency Response

**2024**

**2025**

- 5 event days
  - Changes to 48 circuits
  - Through Sep. 25
- 4 event days
  - Changes to 59 circuits
  - Through Sep. 30

**June 2**

Entered Fire Safety Mode (FSM)

**July 9th**

13 Circuits placed in EFSM

**July 14th**

14 Circuits placed in EFSM

**Aug 13th**

20 circuits placed in EFSM

**Sept 25th**

12 Circuits placed in EFSM

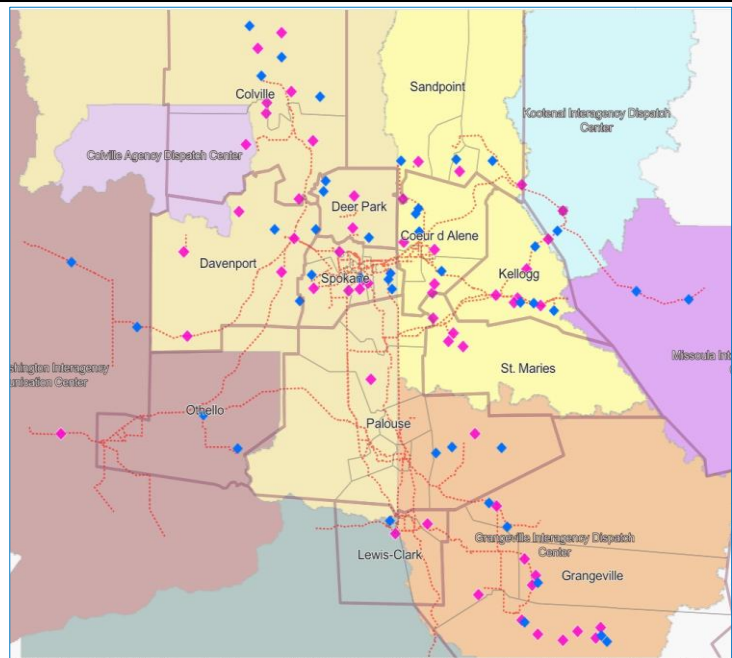


# Situational Awareness

## Weather

**Weather Station Installs completed & transmitting**

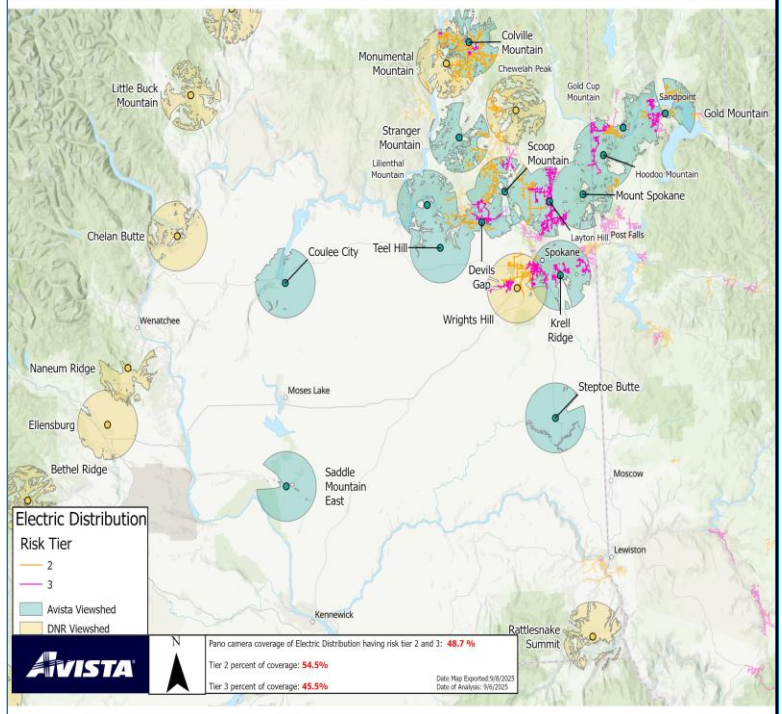
- Transmission mounted stations will be next round
- Potential for 20-30 distribution installs (expected end of Sep. / beginning of Oct.)
- Dashboard operational & being utilized
- Forecasting occurring daily
- Site specific forecasting utilized during weather events



# Situational Awareness

## Fire Detection Cameras

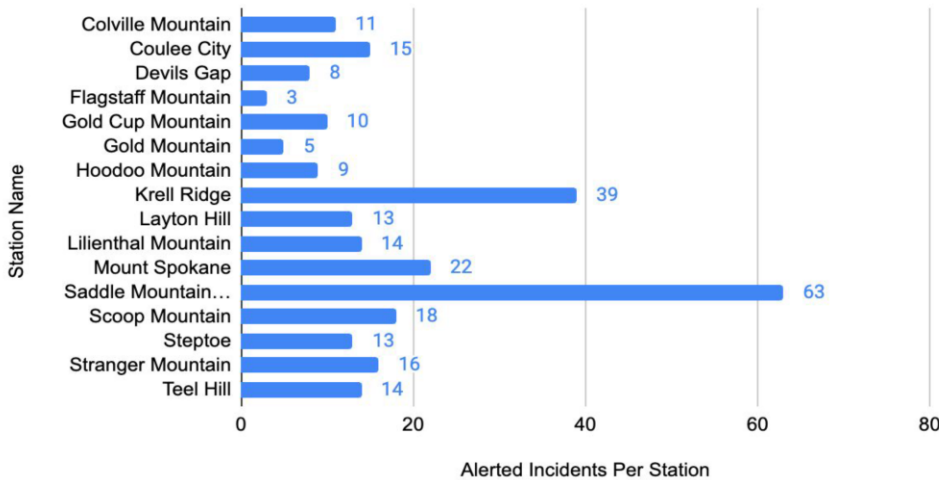
- 15 Cameras
  - 12 in WA
  - 3 in ID
- First Responder onboarding continues, majority of agencies and departments currently utilizing system.
- Public access to view camera feeds expected in Sept.
- RFP for expansion of network in ID expected to be sent out in Sep. or Oct.
  - Vendor selection to occur Q1 2026



23

## Pano AI Summary data

### Alerts Per Station



### Shared Station Alerts

Station Name	Station Owner	Alerted Incidents
Wrights Hill	WA DNR	20
Chelan Butte	WA DNR	17
Monumental Mountain	WA DNR	14
Chewelah Peak	WA DNR	13
Rattlesnake Summit	WA DNR	13

- 273 alerts from Avista owned stations
- 77 alerts from DNR owned stations
- 350 total alerts in 2025

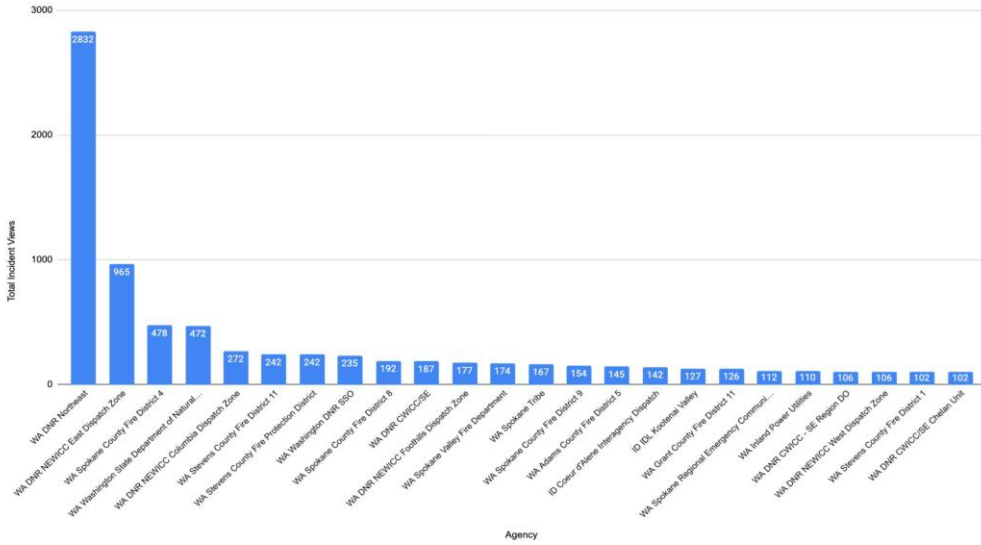
24



24

# Pano AI Summary data

Total Views by Agency - WA Incidents (Over 100 Views)



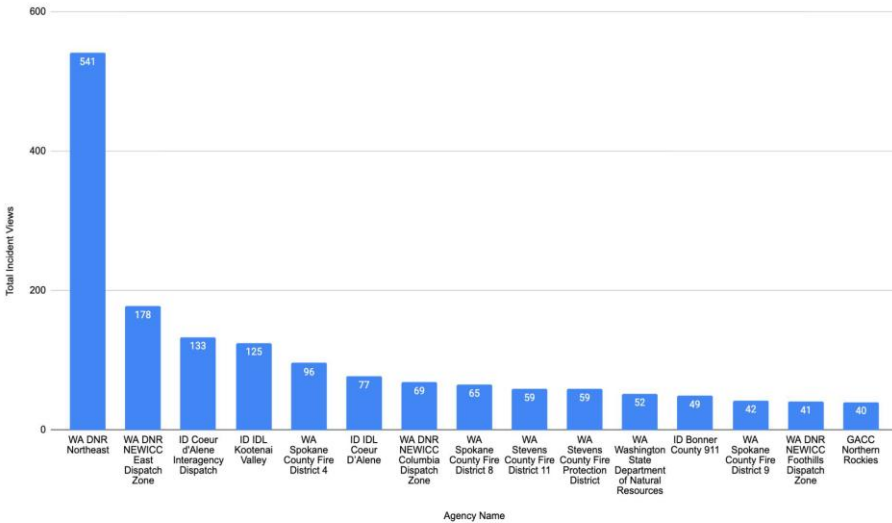
25



25

# Pano AI Summary data

Total Views by Agency - ID Incidents (Over 40 Views)



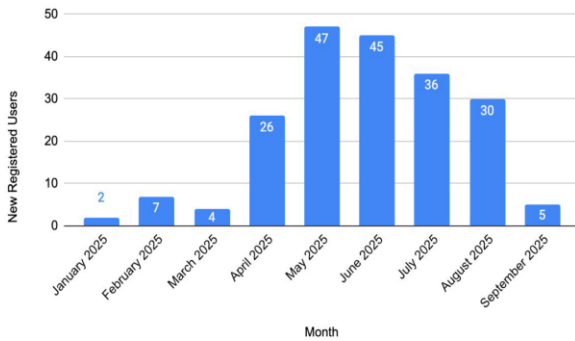
26



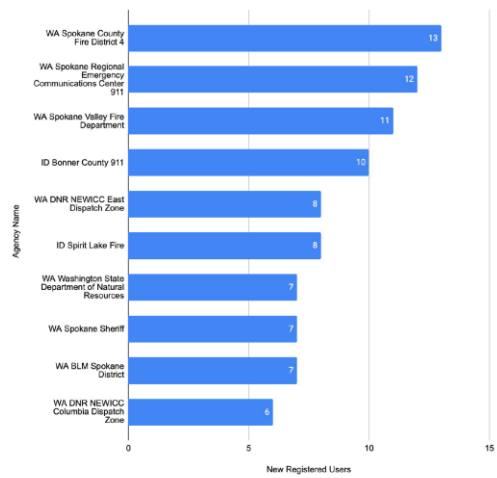
26

# Pano AI Summary data

Monthly New Users



Top 10 Agency With Most New Users (2025 TYD)



# Outreach & Education



72 Public Safety Partners at our PSPS Partner Forum



5 Telephone Townhall Events



38 Event Presentations



PSPS short videos for local fire agencies created



Collaboration with community partners to provide fuel programs, preparedness, outreach & education

- Local fire agencies, DNR, & Emergency Mgrs in WA



Distributed Resiliency SWAG

- Backpacks, solar lightbulbs, solar chargers, re-usable 5-gal water bags, and preparedness checklists

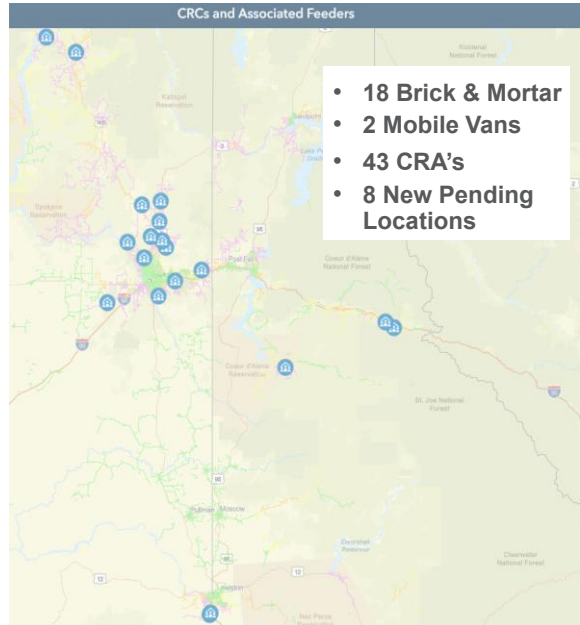


Upcoming Enhancements

- Partner Portal

# 2025 CRC Program

CRCs and Associated Feeders



- 18 Brick & Mortar
- 2 Mobile Vans
- 43 CRA's
- 8 New Pending Locations

# Battery Back Up Program



2025 Season

125 Batteries gifted to life support customers

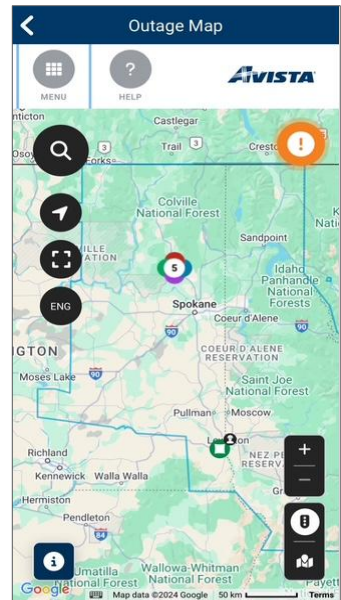
39 Communities received battery support across our service territory

100% Known life support customers on risk feeders during the 8/13 near-PSPS event had battery support from the program



# Future Plans for our Partners

- Partner alert system to notify you of a potential PSPS via email and/or text
- GIS Online mapping tool to include:
  - ✓ Life support customers
  - ✓ Critical Facilities
- Track shutoff progress from watch/warning → de-energization → patrolling → damage and/or → re-energization
- **Future** enhancements to provide widgets to weather stations, mountain top cameras and all other weather outage hazards including gas, points of interest (Activated CRC's)



# Community Outreach in 2025

## Focus on PSPS

- Public Safety Partners
- Elected Officials and Municipalities
- Community Leaders
- Medically vulnerable customers
- Commercial and Residential Customers

## Community Engagement and Support

- Outage map enhancements
- Education and Outreach
- Medically vulnerable customers
- Community Resource Centers (CRCs)

## Encourage Preparedness



31

# Discussion

## • Emergency Response in your City / County

- What concerns you most about extended power outages during wildfire season?
- What does your community need?
- Who/how would you like to be notified?
- Partnership opportunities?
  - Public safety
  - Community engagement
  - Outage preparedness
- Next Steps...



32

