

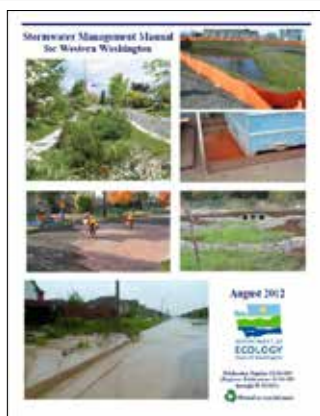
# Resources for Low Impact Development Integration

A comprehensive list of several LID-related guidance manuals and websites is provided below to serve as helpful resources for your jurisdiction as it integrates low impact development (LID) into stormwater management practices and moves towards compliance with the new stormwater permit. These resources are intended for a range of audiences and range from highly technical to less complex.

In response to the growing need for additional training in LID, the Washington Department of Ecology (Ecology) is investing in a \$4 million, 4-year training program that will provide elected officials and public works directors, stormwater practitioners, landscapers and nurseries, composters, realtors, and the building industry with training opportunities around the state. Details of training opportunities can be found on Ecology's website at [www.ecy.wa.gov/programs/wq/stormwater/municipal/LID/TRAINING/elected.html](http://www.ecy.wa.gov/programs/wq/stormwater/municipal/LID/TRAINING/elected.html).

## Guidance manuals and websites

### Washington-specific guidance



#### 2012 Stormwater Management Manuals for Western Washington

Author: WA Department of Ecology

**Intended audience:** Local municipalities, land developers and development engineers, and others covered under an Ecology stormwater general permit

**Contents:**

- Regionally-specific guidance on Best Management Practices (BMPs) for National Pollutant Discharge Elimination System (NPDES) permit compliance
- LID-related definitions, requirements, infeasibility criteria, and performance standards in support of new permit requirements
- Guidance on other stormwater requirements such as flow control and stormwater treatment

**Website:** [www.ecy.wa.gov/programs/wq/stormwater/manual.html](http://www.ecy.wa.gov/programs/wq/stormwater/manual.html)



#### 2004 Stormwater Management Manual for Eastern Washington

Author: WA Department of Ecology

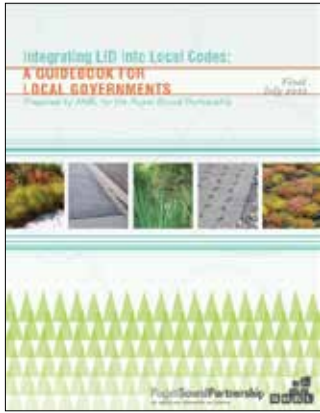
**Intended audience:** Local municipalities, land developers and development engineers, businesses in Eastern Washington

**Contents:**

- Regionally-specific guidance on BMPs for NPDES permit compliance
- LID-related definitions, requirements, and performance standards in support of new permit requirements
- Guidance to set stormwater requirements, design stormwater control and pollution prevention plans and infrastructure, and determine stormwater infrastructure

**Website:** [www.ecy.wa.gov/programs/wq/stormwater/easternmanual/manual.html](http://www.ecy.wa.gov/programs/wq/stormwater/easternmanual/manual.html)

**Please note:** The Stormwater Management Manual for Eastern Washington is being updated in the 2014-2019 permit term, including consideration of LID requirements.



**Integrating LID into Local Codes: A Guidebook for Local Governments**  
Author: Puget Sound Partnership (2012)

**Intended audience:** Local government staff responsible for integrating LID into development codes and standards

**Contents:**

- Systematic, step-by-step approach for integrating LID into existing and new local codes, standards, and regulations
- Includes task timelines, lessons learned, and links to resources and blogs

**Website:** [www.psp.wa.gov/LID\\_GLG.php](http://www.psp.wa.gov/LID_GLG.php)



**LID Technical Guidance Manual for Puget Sound**

Author: Puget Sound Partnership and Washington State University Pierce County Extension

**Intended audience:** Stormwater managers, site designers, engineers, planners, landscape architects, technical staff, policy makers, developers

**Contents:**

- Descriptions of LID goals, objectives, specifications for individual practices, and flow reduction credits available to the Puget Sound
- Research and data to help inform LID application to jurisdictions

**Website:** [www.psp.wa.gov/LID\\_manual.php](http://www.psp.wa.gov/LID_manual.php)



**Washington Stormwater Center LID Website**

Author: Washington State University Puyallup LID Research Program

**Intended audience:** Municipal stormwater permittees, designers, engineers, planners

**Contents:**

- Resources and statewide training programs
- Information on LID-related workshops and educational opportunities
- An LID Project Database that shares project successes and lessons learned from around the Northwest

**Website:** [www.wastormwatercenter.org](http://www.wastormwatercenter.org)

## National-level Guidance



### EPA LID Website

Author: US Environmental Protection Agency

Intended audience: general public, including technical and non-technical audiences

#### Contents:

- Fact sheets and reports, including an LID Barrier Busters fact sheets for state and local decision makers and case study reports
- Design and guidance manuals on integrated LID design approaches, hydrologic analysis, urban design tools, and field evaluations
- Water Quality Scorecard that offers policy options for integrating green infrastructure across scales of land use and municipal departments
- Information resources, videos, and other multi-media

Website: [water.epa.gov/polwaste/green/index.cfm](http://water.epa.gov/polwaste/green/index.cfm)



### Low Impact Development Center Website

Author: Low Impact Development Center, a non-profit organization based in Maryland

Intended audience: general public, with a slight emphasis on more technical audiences

#### Contents:

- LID BMP fact sheets from case studies across the country
- Link to EPA LID literature review
- National manuals on LID design strategies
- Municipal and builders' guidance brochures
- Project and program websites that highlight case study projects, LID-related programs, and guidance for specific audiences and approaches

Website: [lowimpactdevelopment.org](http://lowimpactdevelopment.org)